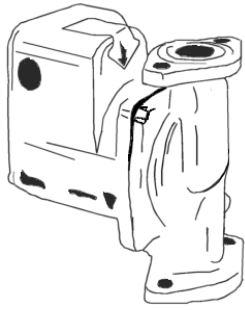


JOB:	REPRESENTATIVE:	
UNIT TAG:	SUBMITTED BY:	DATE:
ENGINEER:	APPROVED BY:	DATE:
CONTRACTOR:		



LITTLE RED®

Iron & Bronze* Booster Pump



*Where Domestic Water is Pumped, Use a Bronze Booster.

DESCRIPTION

The Little Red close coupled Booster Pump is specifically designed for quiet operation in solar and hydronic systems. This inline oil-lubricated pump is available in cast iron or bronze body construction.

OPERATING DATA

Maximum Working Pressure: 125 psi (862 kPa)
 Maximum Operating Temperature: 225°F (107°C)

Motor Ratings:

1/20 HP: 115 Volt, 60 Hz, 1Ø, 3150 RPM
 (110 and 220 Volt, 50 Hz, 1Ø, 2400 RPM models are available upon request)

1/12 HP: 115 Volt, 60 Hz, 1Ø, 3150 RPM
 (110 Volt, 50 Hz, 1Ø, 2600 RPM models are available upon request)

CONSTRUCTION MATERIALS

Booster Body: Cast iron or bronze
 Face Plate: Stainless Steel
 Impeller: Glass filled Noryl
 Shaft: Carbon Steel
 Seal: Mechanical, carbon on ceramic
 Motor Bearings: Bronze, sleeve, oil lubricated

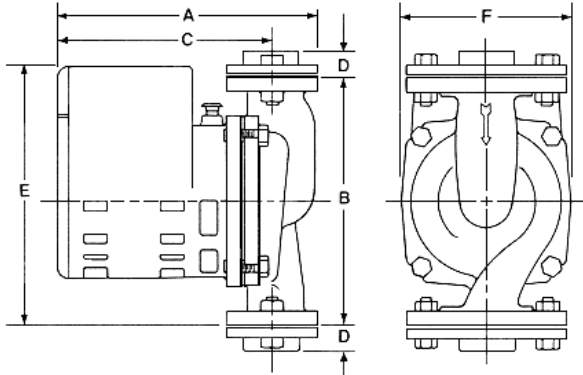
SCHEDULE

MODEL NO.	PART NO.	TAGGING INFORMATION	QUANTITY
LR-20BF	106506		
LR-15B	106513		

Bell & Gossett Booster Pumps equipped with a drip-proof motor are recommended for indoor use only.

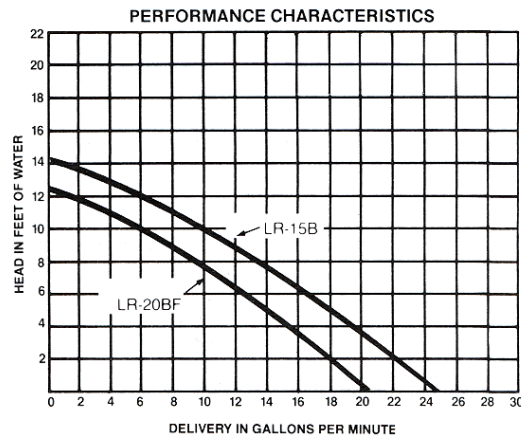
DIMENSIONS AND WEIGHTS

Model No.*	Motor HP	Dimensions										Approx. Shpg. Wt.	
		A		B		C		E		F		Lbs.	kg
		In.	mm	In.	mm	In.	mm	In.	mm	In.	mm		
LR-20BF	1/20	6-15/16	176	6-3/8	162	5-5/8	143	6-11/16	170	4-3/8	111	10.4	4.7
LR-15B	1/12	7-15/16	202	6-3/8	162	6-5/8	168	6-11/16	170	4-3/8	111	13.1	5.9



Flange Size Inches NPT	D	
	In.	mm
3/4	9/16	14
1 & 1-1/4	3/4	19
1-1/2	15/16	24

Dimensions are approximate and subject to change. Contact factory for certified dimensions.



TYPICAL SPECIFICATIONS

The contractor shall furnish and install Inline pumps as illustrated on the plans and in accordance with the following specifications:

1. The pumps shall be of the horizontal, oil-lubricated type, specifically designed and guaranteed for quiet operation, and suitable for 125 (PSI) working pressure.
2. The pumps shall have a steel shaft supported by a horizontal sleeve bearing designed to circulate oil. The pumps are to be equipped with a water-tight seal

to prevent leakage. Mechanical seal faces to be carbon on ceramic. The motor shall be non-overloading at any point on the pump curve.

3. The motor shall be of the drip-proof, sleeve-bearing, quiet-operating construction. The permanent split-capacitor motor shall be equipped with thermal overload protection.

The pump shall be ITT Bell & Gossett Model No. _____ with a capacity of _____ GPM at _____ ft. head.



Bell & Gossett

Bell & Gossett
 8200 N. Austin Avenue, Morton Grove, IL 60053
 Phone (847)966-3700
 Facsimile (847)966-9052
 www.bellgossett.com

