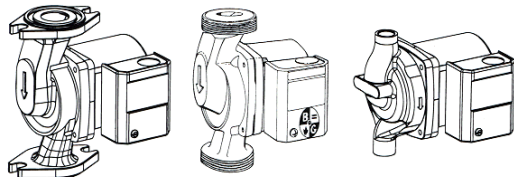


<b>JOB:</b>	<b>REPRESENTATIVE:</b>	
<b>UNIT TAG:</b>	<b>SUBMITTED BY:</b>	<b>DATE:</b>
<b>ENGINEER:</b>	<b>APPROVED BY:</b>	<b>DATE:</b>
<b>CONTRACTOR:</b>		



## Bronze and Stainless Steel Bodied System Lubricated Circulators



### DESCRIPTION

A series of in-line wet rotor circulation pumps designed specifically for quiet operation in open (potable) water systems. These pumps have 100% lead-free bronze or stainless steel bodies.

Automatic Timer and Aquastat accessories are available. (See Submittal A-128A for details).

### CONSTRUCTION MATERIALS

Pump Body:	Impeller:
NBF: 100% Lead-Free Bronze	NBF-33: Noryl <sup>®</sup>
SSF: Stainless Steel	All Others: Polypropylene
Bearings: Carbon	Shaft: Ceramic

### OPERATING DATA

Maximum Working Pressure: 150 psi (10.3 Bar)  
 Maximum Operating Temperature  
 NBF-33: 225°F (107°C)  
 All Others: 230°F (110°C)

### SCHEDULE

MODEL NUMBER	PART NUMBER	CONNECTION	APPROX. SHPG. WT. Lbs. (Kg)	STANDART 60 CYCLE 115 VOLT* SINGLE PHASE MOTOR CHARACTERISTICS			TAGGING INFORMATION	QUANTITY
				WATTS	F.L. AMPS	RPM		
NBF-8S/LW	103257	1/2" Sweat	9.0 (4.1)	39	0.38	2800		
NBF-9U/LW	103258	Union (See Following Page)	9.3 (4.2)	41	0.40	2800		
NBF-10S/LW	103259	1/2" Sweat	9.0 (4.1)	52	0.46	2800		
NBF-12U/LW	103261	Union (See Following Page)	9.3 (4.2)	55	0.48	2800		
NBF-12F/LW	103260	Flange 3/4, 1, 1-1/4, 1-1/2	9.5 (4.3)	55	0.48	2800		
SSF-12F/LW	103358	Flange 3/4, 1, 1-1/4, 1-1/2	9.5 (4.3)	55	0.48	2800		
NBF-18S	103316	1/2" Sweat	9.0 (4.1)	90	0.74	3000		
NBF-22U	103255	Union (See Following Page)	9.3 (4.2)	92	0.80	2940		
NBF-22	103252	Flange 3/4, 1, 1-1/4, 1-1/2	9.5 (4.3)	92	0.80	2940		
SSF-22	103357	Flange 3/4, 1, 1-1/4, 1-1/2	9.5 (4.3)	92	0.80	2940		
NBF-33	103351	Flange 3/4, 1, 1-1/4, 1-1/2	10.4 (4.7)	125	1.10	2950		

\*230 volt motors are available upon request. Contact factory for technical information.

### TYPICAL SPECIFICATIONS

The contractor shall furnish and install in-line circulating pumps as illustrated on the plans and in accordance with the following specifications:

1. The pumps shall be of the horizontal system lubricated type specifically designed and guaranteed for quiet operation.
2. Pump to be suitable for \_\_\_\_\_°F (\_\_\_\_\_°C) [choose one: 225°F (107°C) for NBF-33 or 230°F (110°C) for all other circulators] operation at 150 psig (10.3 Bar) working pressure.
3. The pumps shall have a ceramic shaft supported by carbon bearings. Bearings are to be lubricated by the circulating fluid.

4. Pump body shall be [choose one: 100% lead-free bronze for NBF circulators or stainless steel for SSF circulators]
5. Motor stator to be isolated from circulating fluid through use of stainless steel can. Rotor to be sheathed in stainless steel.
6. Motors shall be non-overloading at any point on the pump curve. Motors to have built-in impedance protection.

Pumps to have a capacity of \_\_\_\_\_ GPM at \_\_\_\_\_ foot head when powered by 115 or 230 volt, 60 cycle single phase electrical supply.

All pumps are to be Bell & Gossett Model \_\_\_\_\_.

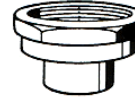
Bell & Gossett



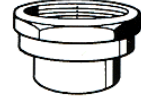
HALF UNION CONNECTIONS

(For NBF-9U/LW, NBF-12U/LW or NBF-22U)

MODEL NUMBER	PART NUMBER	DESCRIPTION (SETS OF 2)
UC-1/2S	113203	1/2" Bronze Union Sweat
UC-3/4S	113201	3/4" Bronze Union Sweat
UC-3/4NPT	113202	3/4" Bronze Union NPT Female

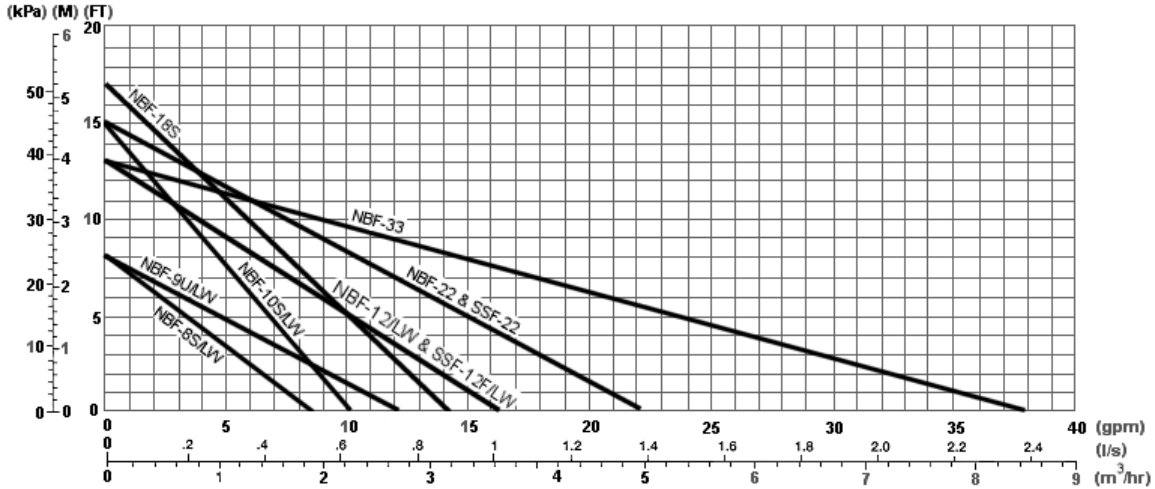


Bronze Half Union (Sweat)  
UC-1/2S and UC-3/4S

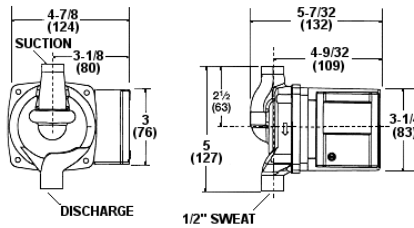


Bronze Half Union (Threaded)  
UC-3/4NPT

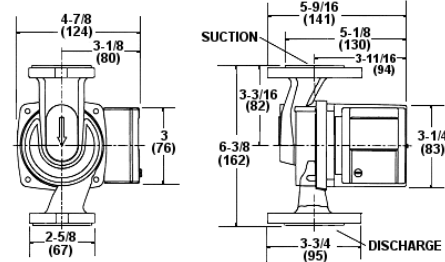
PUMP PERFORMANCE CURVE



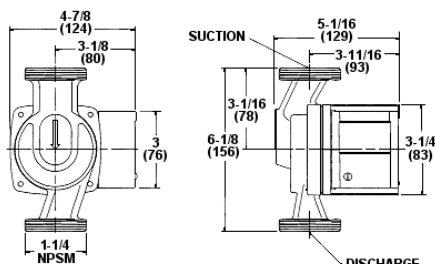
DIMENSIONS IN INCHES (MM)



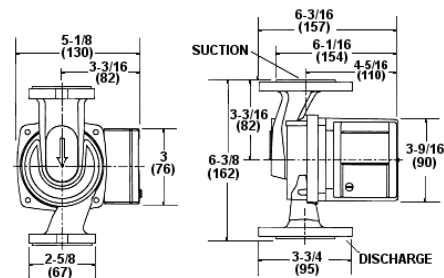
NBF-8S/LW, NBF-10S/LW or NBF-18S



NBF-12F/LW, SSF-12F/LW, NBF-22 OR SSF-22



NBF-9U/LW, NBF-12U/LW OR NBF-22U



NBF-33

Dimensions are subject to change. Not to be used for construction purposes unless certified.



Bell & Gossett

Bell & Gossett  
8200 N. Austin Avenue, Morton Grove, IL 60053  
Phone (847)966-3700  
Facsimile (847)966-9052  
www.bellgossett.com