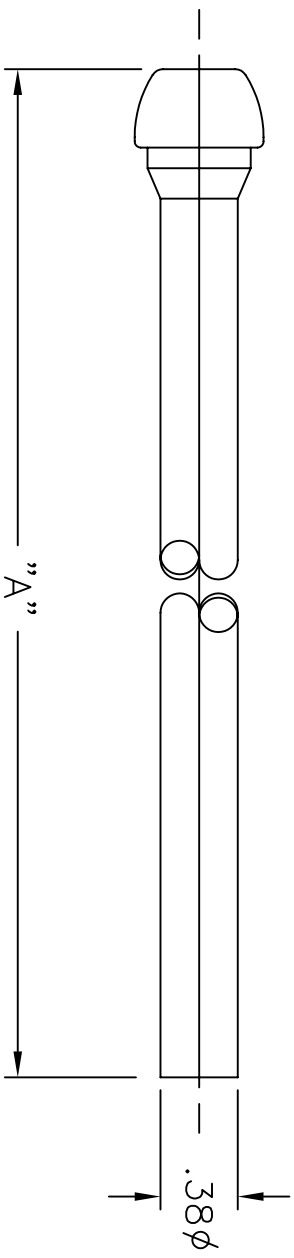
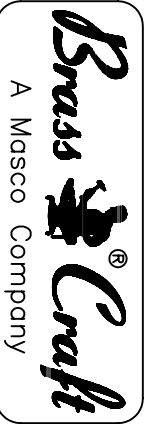


(B)

LET.	DATE	PER	BY	CHANGE
A	10/01/02	WFT	KAK	RELEASE
B	2/26/03	WFT	MJP	REVISED CHART

ITEM I.D.	ITEM DESC.	DIMENSION "A"
1-12A A	1-12A	11.63
1-12A C	1-12A	11.63
1-12A P	1-12A	11.63
1-12A R	1-12A	11.63
1-15A C	1-15A	14.63
1-15A P	1-15A	14.63
1-15A R	1-15A	14.63
1-20A A	1-20A	19.63
1-20A C	1-20A	19.63
1-20A P	1-20A	19.63
1-20A R	1-20A	19.63
1-30A A	1-30A	29.63
1-30A C	1-30A	29.63
1-30A P	1-30A	29.63
1-30A R	1-30A	29.63
1-36A C	1-36A	35.63
1-36A P	1-36A	35.63
1-36A R	1-36A	35.63



 <p>BrassCraft A Masco Company</p>		DESCRIPTION 3/8 O.D. FAUCET RISER TUBE (SUBMITTAL)		DRAWING NO. RPG0094B	
NOVI, MICHIGAN ALL GDT PER ANSI STD Y14.5M CLASSIFICATION OF QUALITY LEVELS		DRAWN DATE: 10/01/2002 KLIMKIE		MATERIAL ITEM DESCRIPTION 1-12A SEE CHART	
CLASS SYMBOL		CHK'D. DATE: 03/31/2003 KAK		VOLUME ITEM ID 1-12A C SEE CHART	
KPC (KEY PRODUCT CHARACTERISTICS) STPC(STANDARD PRODUCT CHARACTERISTICS)		APP'D. DATE:		NOTE: UNLESS OTHERWISE SPECIFIED TWO PLACE DECIMALS THREE PLACE DECIMALS ANGULARITY	
PRODUCT MARKINGS		UNLESS OTHERWISE SPECIFIED +/-.010 +/-.005 +/-.1"		UNITS INCH SCALE: UNLESS NOTED FULL	
				REV. B	

This drawing and all data contained herein is the confidential and exclusive property of BrassCraft Manufacturing, and shall not be disclosed to others without the written consent of BrassCraft. This drawing must be returned to BrassCraft if requested.