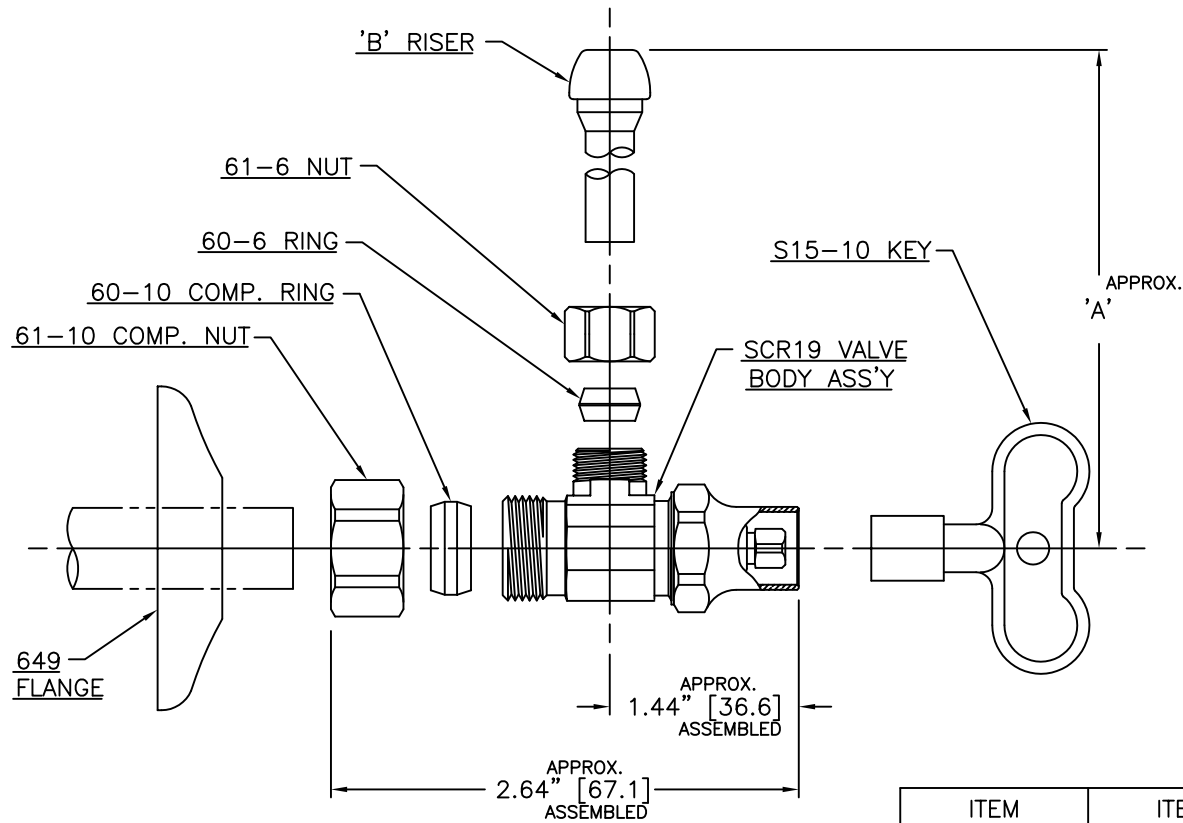






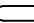
LET.	DATE	PER	BY	CHANGE
E	12/30/02	WFT	MJP	REVISED & UPDATED



ITEM DESCRIPTION	ITEM I.D.	'B' RISER DESCRIPTION	DIM 'A'	FINISH
SCR1912A	SCR1912A C	1-12A	11.88" [301.2]	CHROME
SCR1915A	SCR1915A C	1-15A	14.86" [377.4]	CHROME
SCR1920A	SCR1920A C	1-20A	19.86" [504.4]	CHROME

NOTE:
DIMENSIONS IN [] ARE MILLIMETER

This drawing and all data contained herein is the confidential and exclusive property of BrassCraft Manufacturing, and shall not be disclosed to others without the written consent of BrassCraft. This drawing must be returned to BrassCraft if requested.

 A Masco Company NOVI, MICHIGAN		DESCRIPTION		DRAWING NO.	
		1/2 NOM. COMP. x 3/8 O.D. COMP. RISER W/LOOSE KEY (SUBMITTAL)		VPA0209E	
DRAWN	DATE:	MATERIAL	ITEM DESCRIPTION		
SCHUTTE	7/18/97		SCR1912A SEE CHART		
CHK'D.	DATE:	VOLUME	ITEM ID		
Klimkie	02/14/2003		SCR1912A C SEE CHART		
APP'D.	DATE:	NOTE: UNLESS OTHERWISE SPECIFIED		 UNITS INCH	SCALE: (UNLESS NOTED) FULL
CLASS SYMBOL KPC (KEY PRODUCT CHARACTERISTICS)  STPC (STANDARD PRODUCT CHARACTERISTICS)  PRODUCT MARKINGS 		TWO PLACE DECIMALS +/- .010 THREE PLACE DECIMALS +/- .005 ANGULARITY +/- 1°			