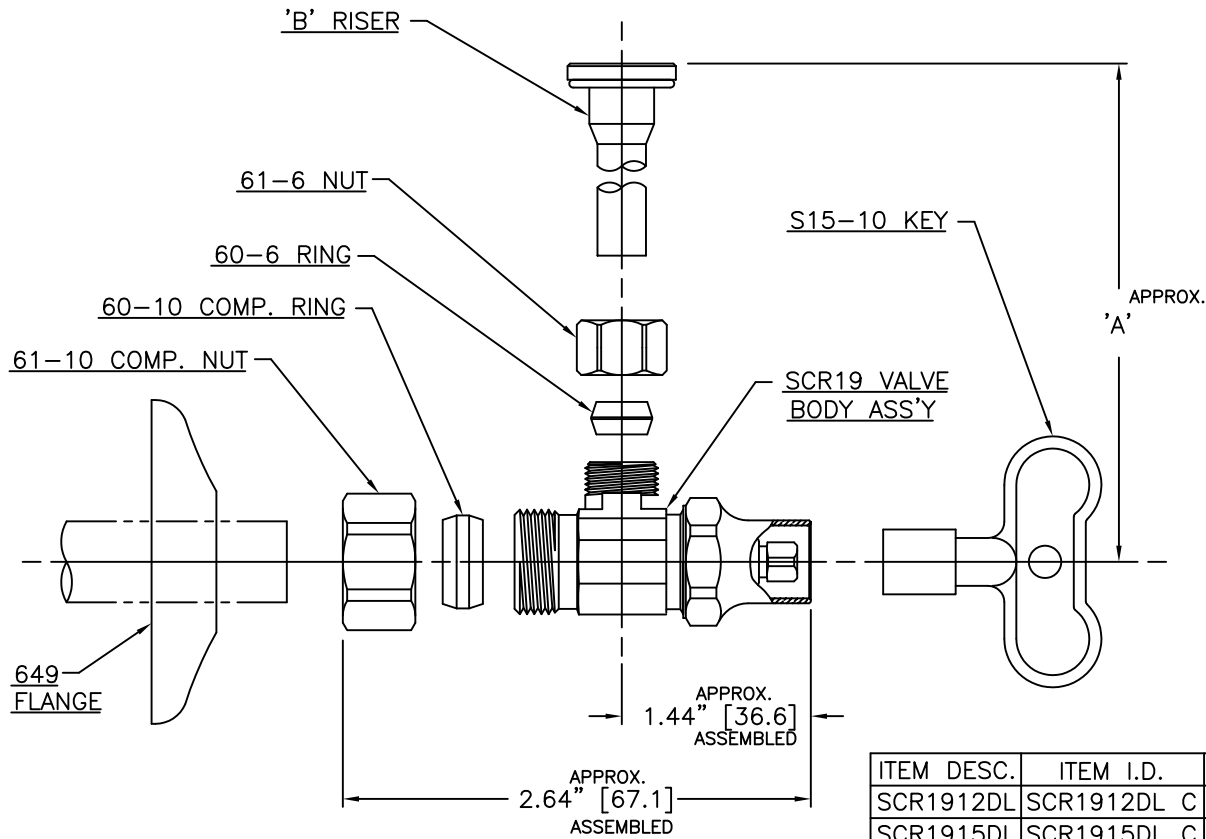




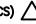
LET.	DATE	PER	BY	CHANGE
C	12/30/02	WFT	MJP	REVISED & UPDATED



ITEM DESC.	ITEM I.D.	'B' RISER DESC	DIM 'A'	FINISH
SCR1912DL	SCR1912DL C	1-12DL	11.86" [301.2]	CHROME
SCR1915DL	SCR1915DL C	1-15DL	14.86" [377.4]	CHROME
SCR1920DL	SCR1920DL C	1-20DL	19.86" [504.4]	CHROME

NOTE:
DIMENSIONS IN [] ARE MILLIMETER

This drawing and all data contained herein is the confidential and exclusive property of BrassCraft Manufacturing, and shall not be disclosed to others without the written consent of BrassCraft. This drawing must be returned to BrassCraft if requested.

 A Masco Company NOVI, MICHIGAN		DESCRIPTION		DRAWING NO.	
		1/2 NOM COMP X 3/8 OD COMP W/RISER & LOOSE KEY(SUBMITTAL)		VPA0207C	
DRAWN	DATE:	MATERIAL	ITEM DESCRIPTION		
PERNAK	12/30/02				
CHK'D.	DATE:	VOLUME	ITEM ID		
Klimkie	02/25/2003				
APP'D.	DATE:	NOTE: UNLESS OTHERWISE SPECIFIED		UNITS	SCALE: (UNLESS NOTED)
		TWO PLACE DECIMALS +/- .010			
KPC (KEY PRODUCT CHARACTERISTICS) 		THREE PLACE DECIMALS +/- .005		SIZE	REV.
STPC (STANDARD PRODUCT CHARACTERISTICS) 		ANGULARITY +/- 1°			
PRODUCT MARKINGS 