



2100 SOUTH CLEARWATER DRIVE
DES PLAINES, ILLINOIS 60018-5999
847-803-5000

FITTING NO.

1028

SUBMITTED MODEL NO.

Last As Long As the Building

JOB NAME

ITEM NO

SUBMITTED AS SHOWN

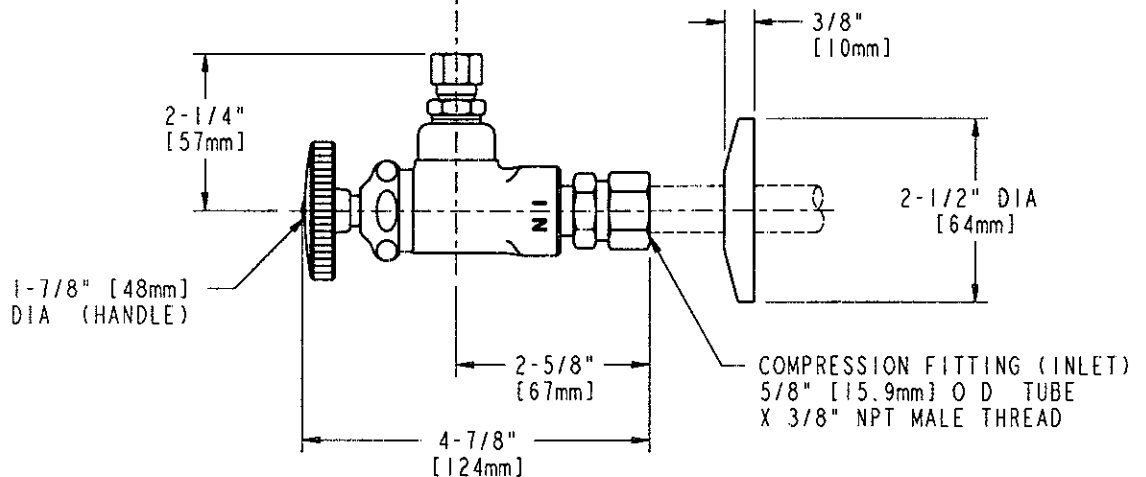
SUBMITTED AS NOTED

SEE ATTACHED FOR
SUBMITTED MODIFICATION

ANSI/NSF61, SECTION 9
ANSI A112.18.1
CSA B125

NOTE: ALL DOTTED LINE
PIPING SUPPLIED BY OYHERS

3/8" [9.5mm] O D
X 12" [305mm] LG
NOMINAL FLEXIBLE
SUPPLY RISER



DIMENSIONS IN INCHES AND [MILLIMETERS]

TECHNICAL DATA

SPECIFICATION MANUAL

ANGLE VALVE WITH WALL FLANGE
3/8 WHEEL HANDLE
SLO-COMPRESSION UNIT
POLISHED CHROME FINISH

5/8" [15.9mm] O.D. COMP. INLET
3/8" [9.5mm] O.D. COMP. OUTLET
ANSI A112.18.1 COMPLIANT
CSA B125 COMPLIANT

Roughing in dimensions may vary and are subject to change. No responsibility is assumed for use of superseded or voided data. (0199)