

# CHICAGO FAUCETS



2100 SOUTH CLEARWATER DRIVE  
DES PLAINES, ILLINOIS 60018-5999

Last As Long As The Building

FITTING NO.

2200-4

SUBMITTED MODEL NO.

JOB NAME

ITEM NO.

SUBMITTED AS SHOWN

SUBMITTED AS NOTED

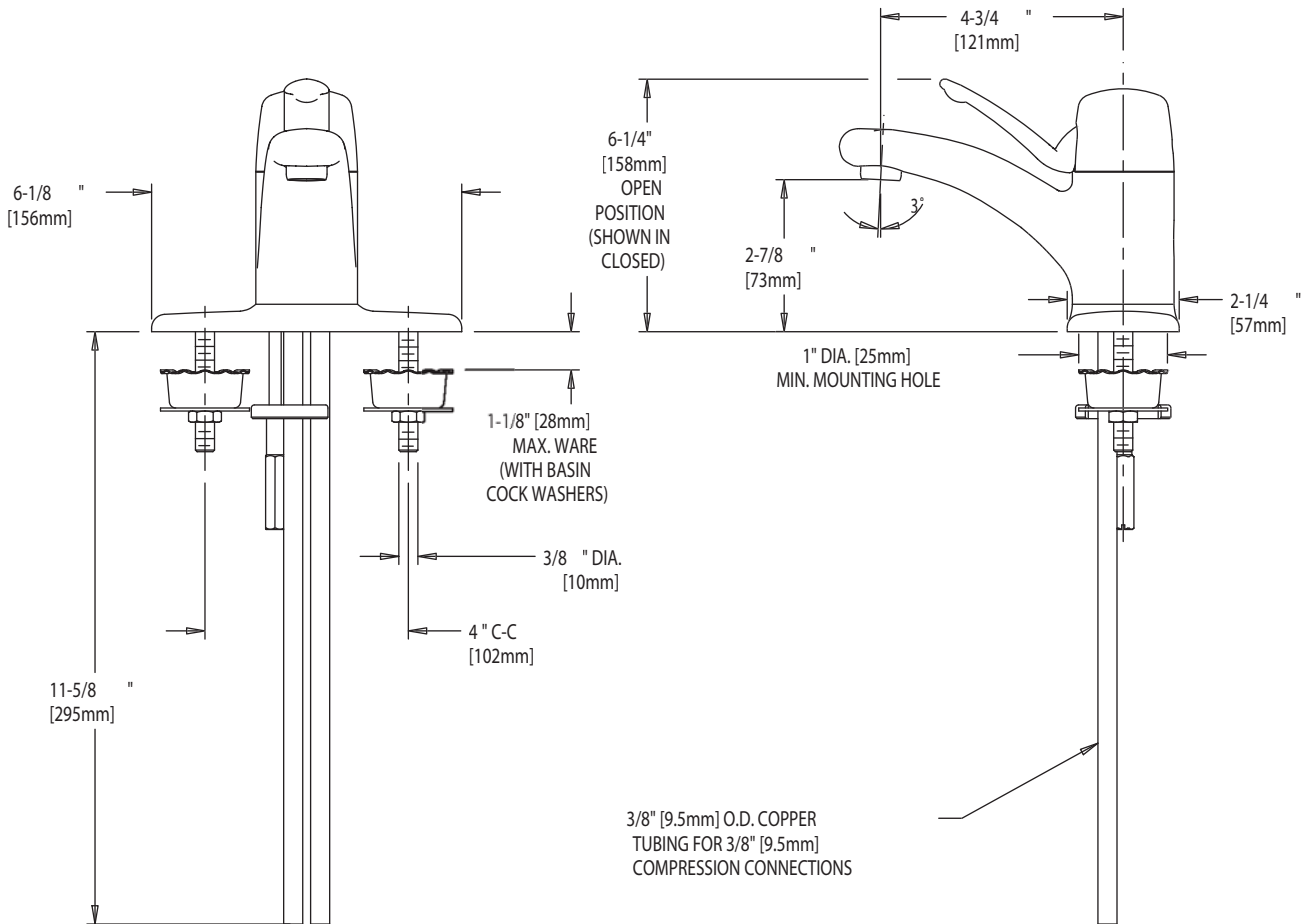
SEE ATTACHED FOR  
SUBMITTED MODIFICATION



ADA COMPLIANT

IS ASSUMED FOR USE OF SUPERCEDED OR VOIDED DATA.

ROUGHING IN DIMENSIONS MAY VARY AND ARE SUBJECT TO CHANGE. NO RESPONSIBILITY



DIMENSIONS IN INCHES AND [MILLIMETERS].

## TECHNICAL DATA

- MARATHON DECK MOUNTED FITTING
- 4-3/4" CAST BRASS SPOUT
- METAL LEVER HANDLE
- CERAMIC MIXING CARTRIDGE
- TEMPERATURE LIMIT STOP
- VOLUME CONTROL
- INTEGRAL WATER HAMMER PREVENTER
- FINISH: CHROME PLATE

- E12 SOFTFLO AERATOR
- 2.2 GPM (8.3 L/min.) MAXIMUM FLOW
- 3/8" COPPER SUPPLY TUBE INLETS
- 6-1/8" X 2-1/4" COVER PLATE
- ASME A112.18.1M
- CSA B125
- NSF 61

DATE: 2-11-03

BY: JAR

CHK'D:

APP'D:

REV: B

2200-4