

# CHICAGO FAUCETS



2100 SOUTH CLEARWATER DRIVE  
DES PLAINES, ILLINOIS 60018-5999

FITTING NO.

2300-8

SUBMITTED MODEL NO.

Last As Long As The Building

JOB NAME

ITEM NO.

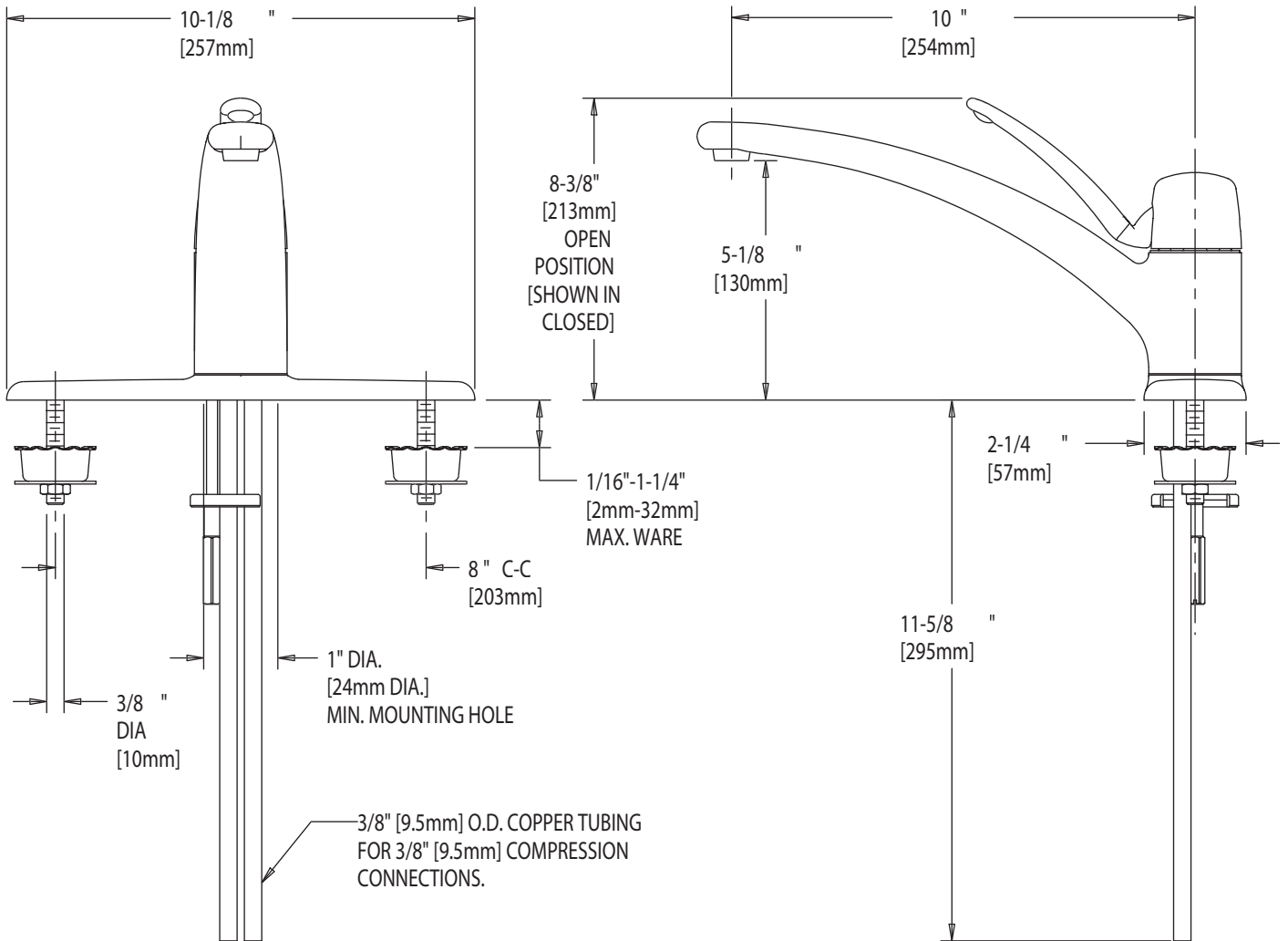
SUBMITTED AS SHOWN

SUBMITTED AS NOTED

SEE ATTACHED FOR  
SUBMITTED MODIFICATION



ADA COMPLIANT



IS ASSUMED FOR USE OF SUPERCEDED OR VOIDED DATA.

ROUGHING IN DIMENSIONS MAY VARY AND ARE SUBJECT TO CHANGE. NO RESPONSIBILITY

DIMENSIONS IN INCHES AND [MILLIMETERS].

## TECHNICAL DATA

- MARATHON DECK MOUNTED FITTING
- 10" CAST BRASS SPOUT
- METAL LEVER HANDLE
- CERAMIC MIXING CARTRIDGE
- 3/8" COPPER SUPPLY TUBE INLETS
- TEMPERATURE LIMIT STOP
- FINISH: CHROME PLATE

- VOLUME CONTROL
- INTEGRAL WATER HAMMER PREVENTER
- E12 SOFTFLO AERATOR
- 2.2 GPM [8.3 L/min.] FLOW RATE
- ASME A112.18.1M
- CSA B125
- NSF 61 COMPLIANT

DATE: 5-1-02

BY: JAR

CHK'D:

APP'D:

REV: B

2300-8