



2100 SOUTH CLEARWATER DRIVE
DES PLAINES, ILLINOIS 60018-5999
847-803-5000

FITTING NO.

441-LK

SUBMITTED MODEL NO.

Last As Long As the Building

JOB NAME

ITEM NO.

SUBMITTED AS SHOWN

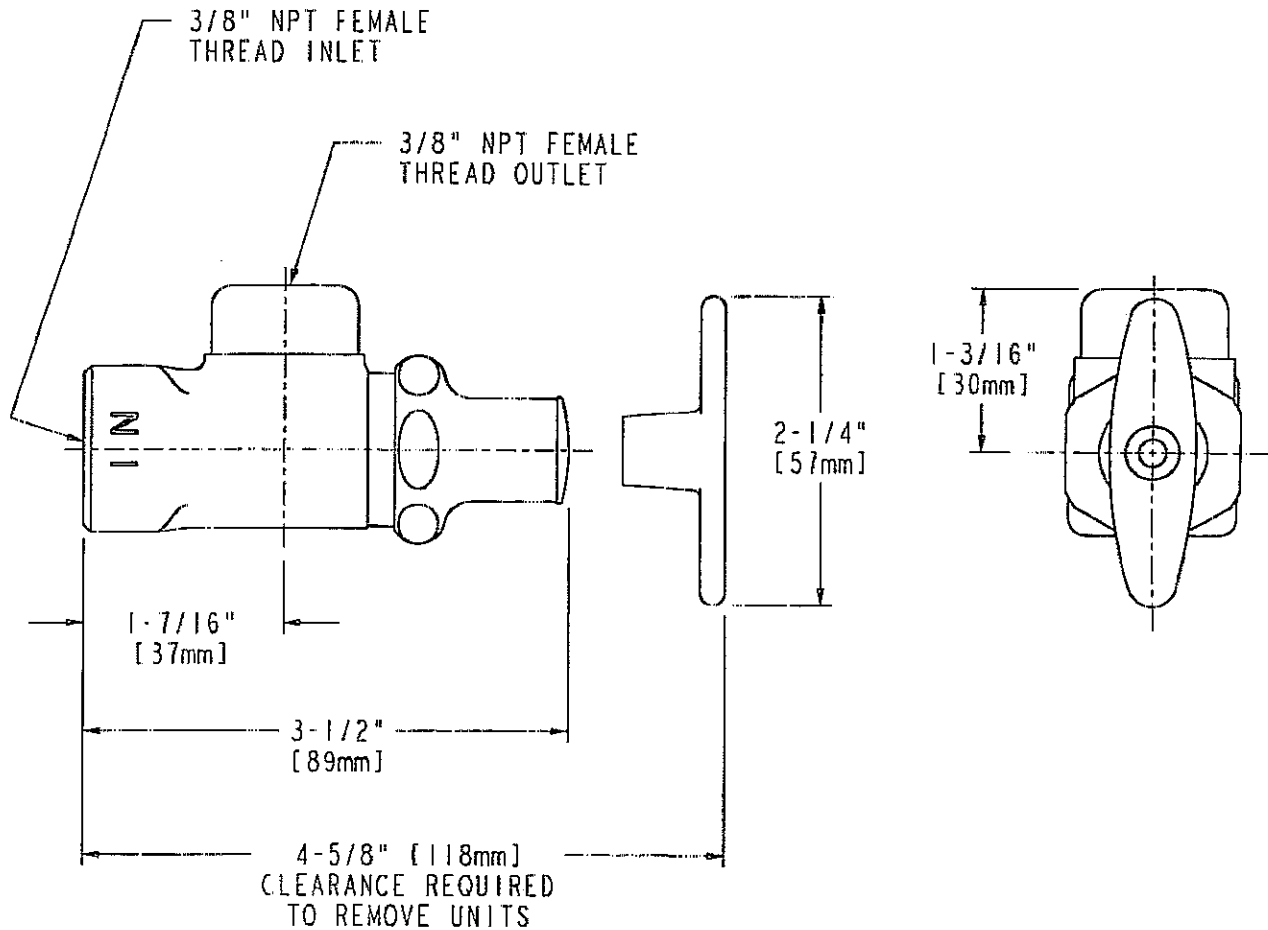
SUBMITTED AS NOTED

SEE ATTACHED FOR
SUBMITTED MODIFICATION

ANSI/NSF61, SECTION 9

ANSI A112.18.1

CSA B125



DIMENSIONS IN INCHES AND [MILLIMETERS]

TECHNICAL DATA

SPECIFICATION MANUAL

LOOSE KEY ANGLE STOP VALVE
LOOSE KEY TEE HANDLE
SLO-COMPRESSION UNIT
POLISHED CHROME FINISH OR AS SPECIFIED

ANSI A112.18.1 COMPLIANT
CSA B125 COMPLIANT

Roughing in dimensions may vary and are subject to change. No responsibility is assumed for use of superseded or voided data. (0199)