

CHICAGO FAUCETS

Last As Long As The Building



2100 SOUTH CLEARWATER DRIVE
DES PLAINES, ILLINOIS 60018-5999

FITTING NO.

910-G

SUBMITTED MODEL NO.

JOB NAME

ITEM NO.

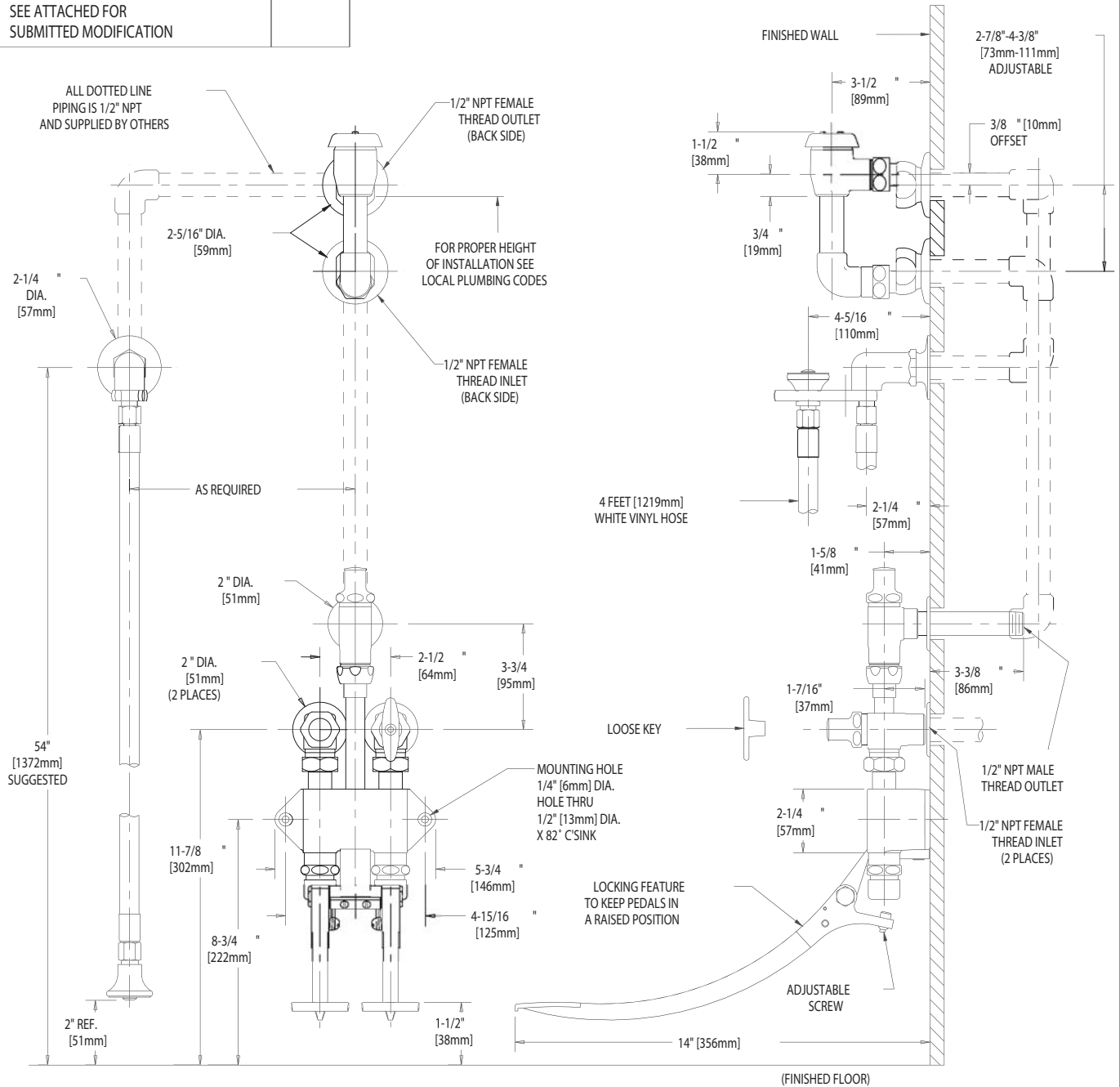
SUBMITTED AS SHOWN

SUBMITTED AS NOTED

SEE ATTACHED FOR
SUBMITTED MODIFICATION

IS ASSUMED FOR USE OF SUPERCEDED OR VOIDED DATA. (0192-1)

ROUGHING IN DIMENSIONS MAY VARY AND ARE SUBJECT TO CHANGE. NO RESPONSIBILITY



DIMENSIONS IN INCHES AND [MILLIMETERS].

TECHNICAL DATA

- WALL MOUNTED PEDAL VALVE CONCEALED BED PAN FLUSHER
- 625X NAIAD PUSH BUTTON CARTRIDGES
- LOOSE KEY STOPS
- SLO-COMPRESSION CARTRIDGES
- 892G ELEVATED VACUUM BREAKER
- FINISH: CHROME PLATE

- ANGLE VALVE WITH VOLUME CONTROL
- VOLUME CONTROL UNIT
- E21 SPRAY OUTLET
- 4 FEET [1219mm] WHITE VINYL HOSE
- ASME A112.18.1M COMPLIANT
- CSA B125 COMPLIANT

DATE: 05-23-02

BY: SID

CHK'D:

APP'D:

REV: A

910-G