

# CHICAGO<sup>®</sup> FAUCETS

2100 SOUTH CLEARWATER DRIVE  
DES PLAINES, ILLINOIS 60018-5999

FITTING NO.

**930-VR**

SUBMITTED MODEL NO.

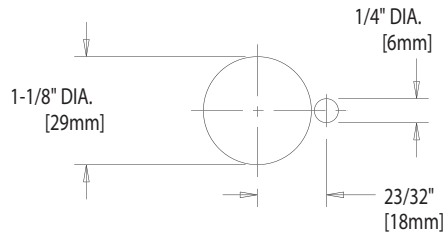
JOB NAME

ITEM NO.

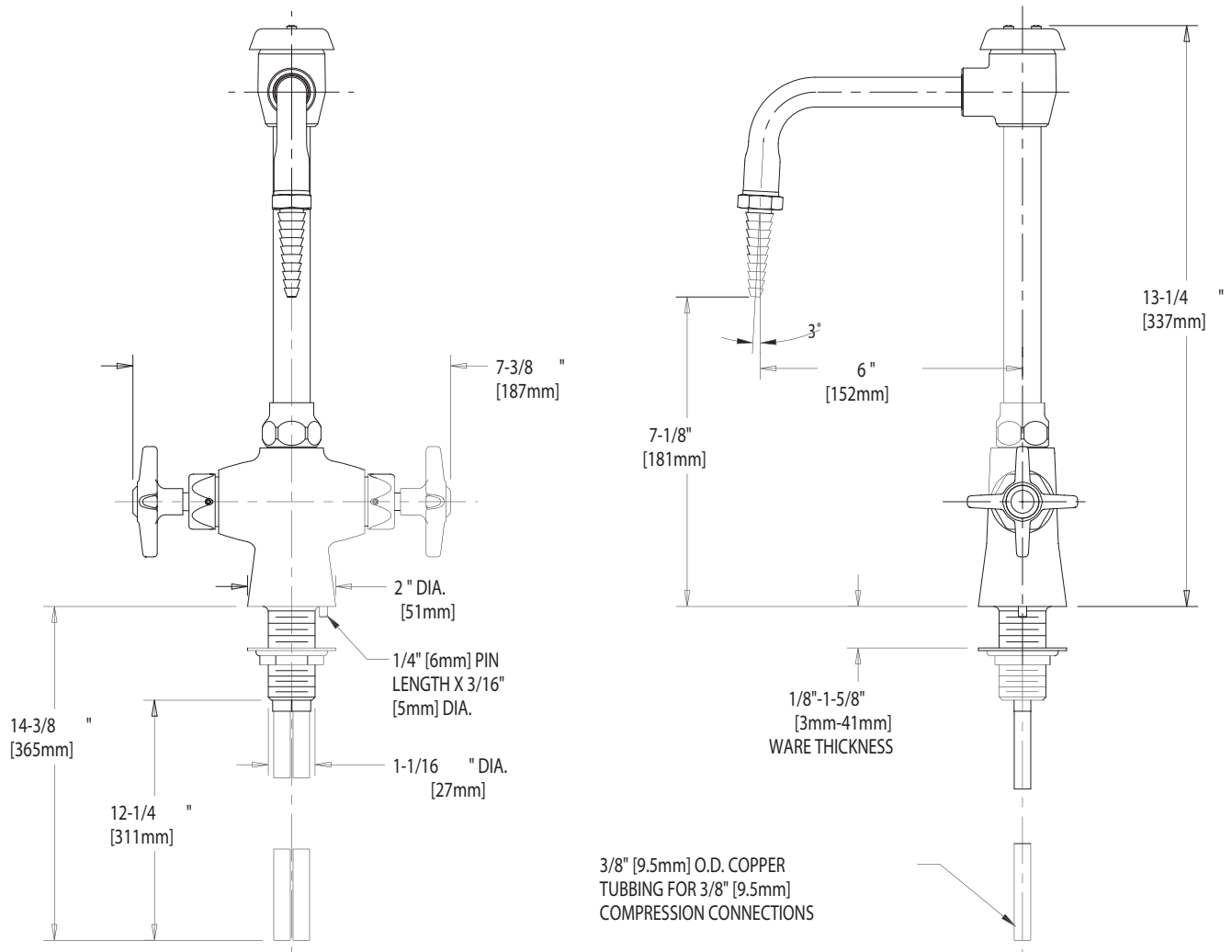
SUBMITTED AS SHOWN

SUBMITTED AS NOTED

SEE ATTACHED FOR  
SUBMITTED MODIFICATION



PLAN VIEW HOLE LOCATION  
FOR BODY SHANK AND PIN



3/8" [9.5mm] O.D. COPPER  
TUBING FOR 3/8" [9.5mm]  
COMPRESSION CONNECTIONS

DIMENSIONS IN INCHES AND [MILLIMETERS].

TECHNICAL DATA

- DECK MOUNTED VANDAL RESISTANT LABORATORY FITTING
- RIGID VACUUM BREAKER SPOUT
- 204 INDEXED 4-ARM HANDLES
- SLO-COMPRESSION UNITS
- FINISH AS SPECIFIED

- 3/8" [9.5mm] COPPER SUPPLY TUBES
- E7 LAB NOZZLE OUTLET
- ANS1 A112.18 COMPLIANT
- CSA B125 COMPLIANT

DATE: 04-25-97

BY: MGM

CHK'D:

APP'D:

REV: 04-25-97

**930-VR**

IS ASSUMED FOR USE OF SUPERCEDED OR VOIDED DATA. (0192-1)

ROUGHING IN DIMENSIONS MAY VARY AND ARE SUBJECT TO CHANGE. NO RESPONSIBILITY