



Wall Hung Lavatory
Vitreous China

FEATURES

• **1300V Yorkshire™**

1300V Yorkshire™ (4" centerset) 20" x 18" vitreous china lavatory with semi-oval basin, 5" wide shelf back, splash lip, front overflow, soap depressions, and concealed hanger.

• **1300S Yorkshire™**

1300S Yorkshire™ (8" centerset) 20" x 18" vitreous china lavatory with semi-oval basin, 5" wide shelf back, splash lip, front overflow, soap depressions, and concealed hanger.

• **1300H Yorkshire™**

1300H Yorkshire™ (one hole centerset) 20" x 18" vitreous china lavatory with semi-oval basin, 5" wide shelf back, splash lip, front overflow, soap depressions, and concealed hanger.

Trim:

Waste:

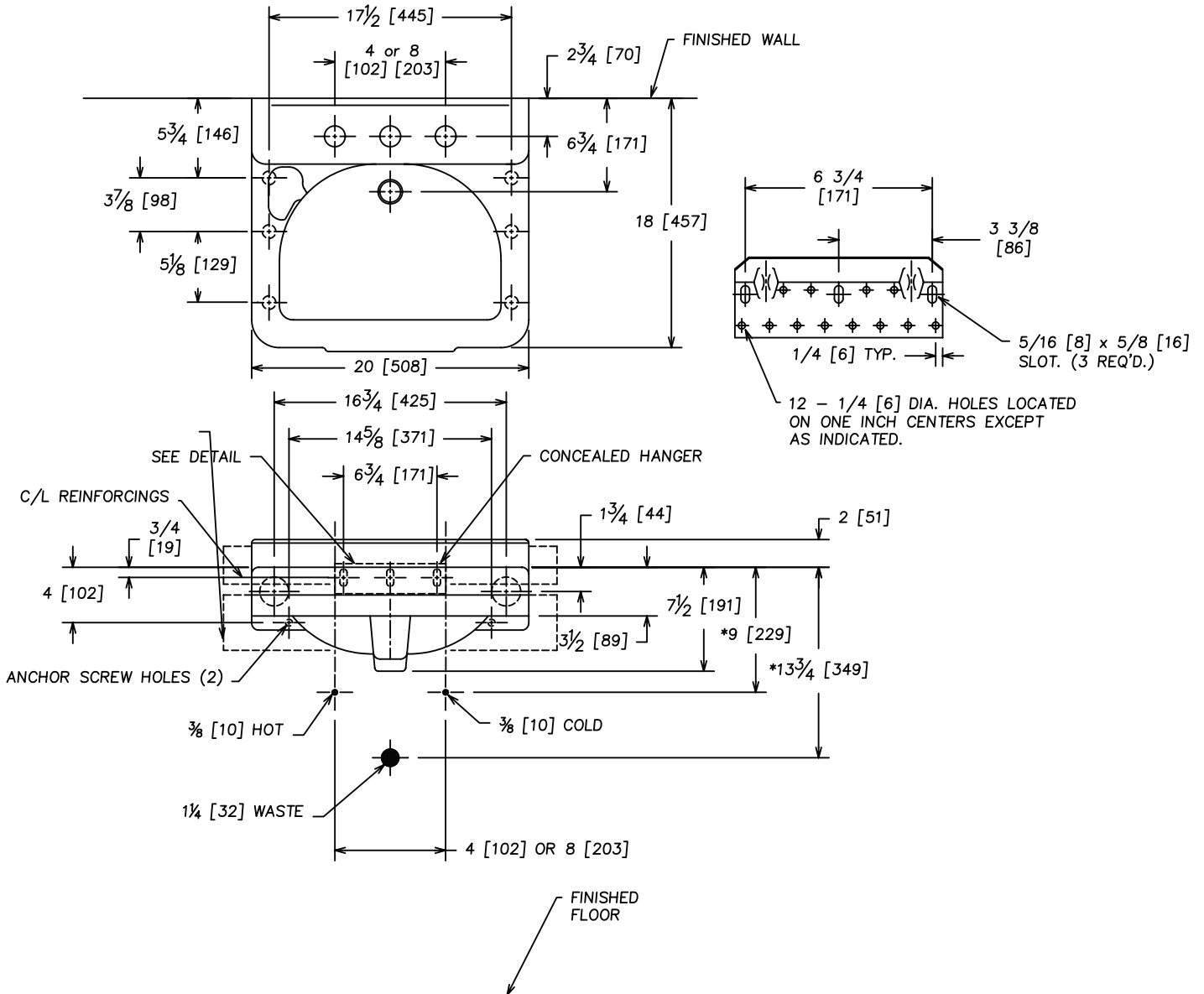
Supplies:

Trap:

NOTES

- Fixture dimensions conform to ANSI/ASME A112.19.2M standard.
- Size: Lavatory 20" x 18", Basin 15 5/8" x 11 1/4"
- Fixture complies with Americans With Disabilities Act when roughed-in on 12" centerline from the front of countertop and the top of the lavatory is mounted at rim height of 34" maximum.
- Available with optional drilling for carrier with concealed arms, when specified.





NOTE: * SUGGESTED DIMENSION-VARIABLE DEPENDING UPON TYPE OF SUPPLY AND WASTE.
** FIXTURE COMPLIES WITH AMERICANS WITH DISABILITIES ACT WHEN ROUGHED-IN ON 12" CENTERLINE FROM THE FRONT OF COUNTERTOP AND THE TOP OF THE LAVATORY IS MOUNTED AT RIM HEIGHT OF 34" MAXIMUM.
ALL ANCHOR HOLES MUST BE USED WITH WALLHANGER TO INSURE PROPER INSTALLATION.
REQUIRES ¾" OFFSET CARRIER ARMS.