



**Low Consumption
Water Closet Bowl
Vitreous China**

FEATURES

• **3325 Whirlton™**

Bowl: 3325 Whirlton™ (1.6 gpf / 6.0 lpf) elongated rim, vitreous china, siphon jet, whirlpool flush action, 1 ½" top spud and bolt caps. Bowl can be roughed-in at 10" or 12".

Valve: * Flushvalve with vacuum breaker, 1" angle screwdriver stop and flush connection. Suggested (1.6 gpf / 6.0 lpf) flushvalves are:

- | | |
|-------------------|-------------|
| Sloan "Royal" | #111 |
| Delany "Flushboy" | F402-1.6 |
| Zurn "Aquaflush" | Z-6000-WS-1 |

Supply:

Seat:

Color:

NOTES

- Fixture conforms to ANSI/ASME A112.19.2M standard.
- **For efficient operation of the bowl, a minimum flowing water pressure of 25 P.S.I. is required at the valve.
- Fully glazed trapway.

WATER ECONOMY FACTS

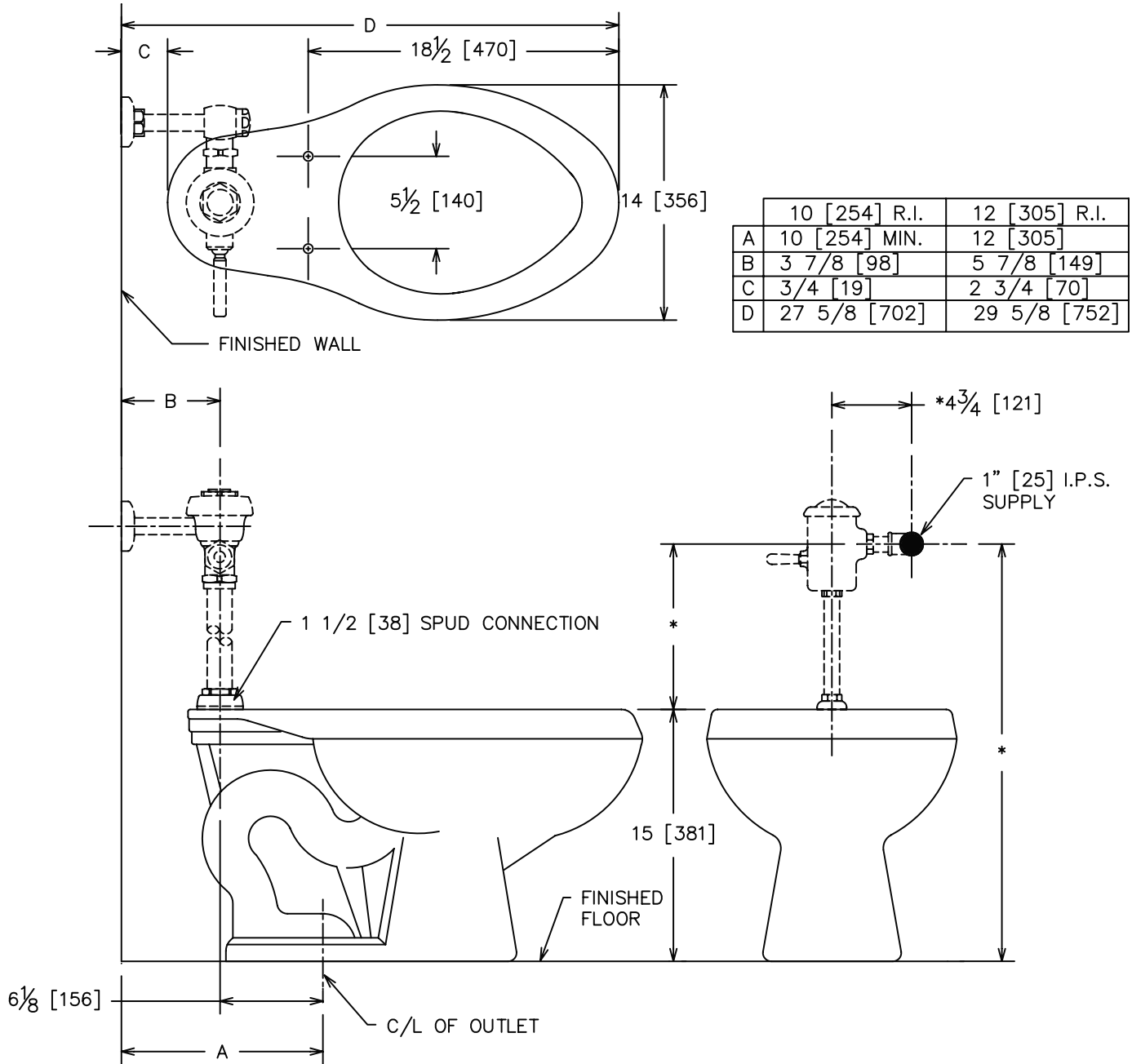
Average Gallons Per Flush	**25 PSI	50 PSI	80 PSI
3325 Elongated Rim	1.54	1.53	1.58
Trapway.....	2"		
Water Surface.....	12" x 10"		
Water Seal.....	3"		



**CRANE
PLUMBING**
Universal-Rundle

* Not furnished by CR/PL, L.L.C. Description for specification purposes only.

10" or 12" Rough-In Low Consumption Bowl



NOTE: * VARIABLE-CHECK WITH MANUFACTURER OF FLUSH VALVE FOR PROPER ROUGHING-IN DIMENSIONS.

IMPORTANT: Roughing-in dimensions may vary $\frac{1}{2}$ " and are subject to change or cancellation without prior notice. No responsibility is assumed for use of superseded or voided leaflets.