



**Low Consumption Wall Hung
Water Closet Bowl**
Vitreous China

FEATURES

• **3446 Placidus™**

Bowl: 3446 Placidus™ (1.6 gpf), vitreous china elongated rim, whirlpool flush, siphon jet, 1½" top spud, wall hung with self-draining jet.

Valve:* Flushvalve with vacuum breaker, 1" angle screwdriver stop and flush connection. Suggested (1.6 gpf) flushvalves are:

- Sloan "Royal" #111
- Delany "Flushboy" #F402-1.6
- Zurn "Aquaflush" #Z-6000-WS-1

Supply:

Seat:

Color:

Support:

NOTES

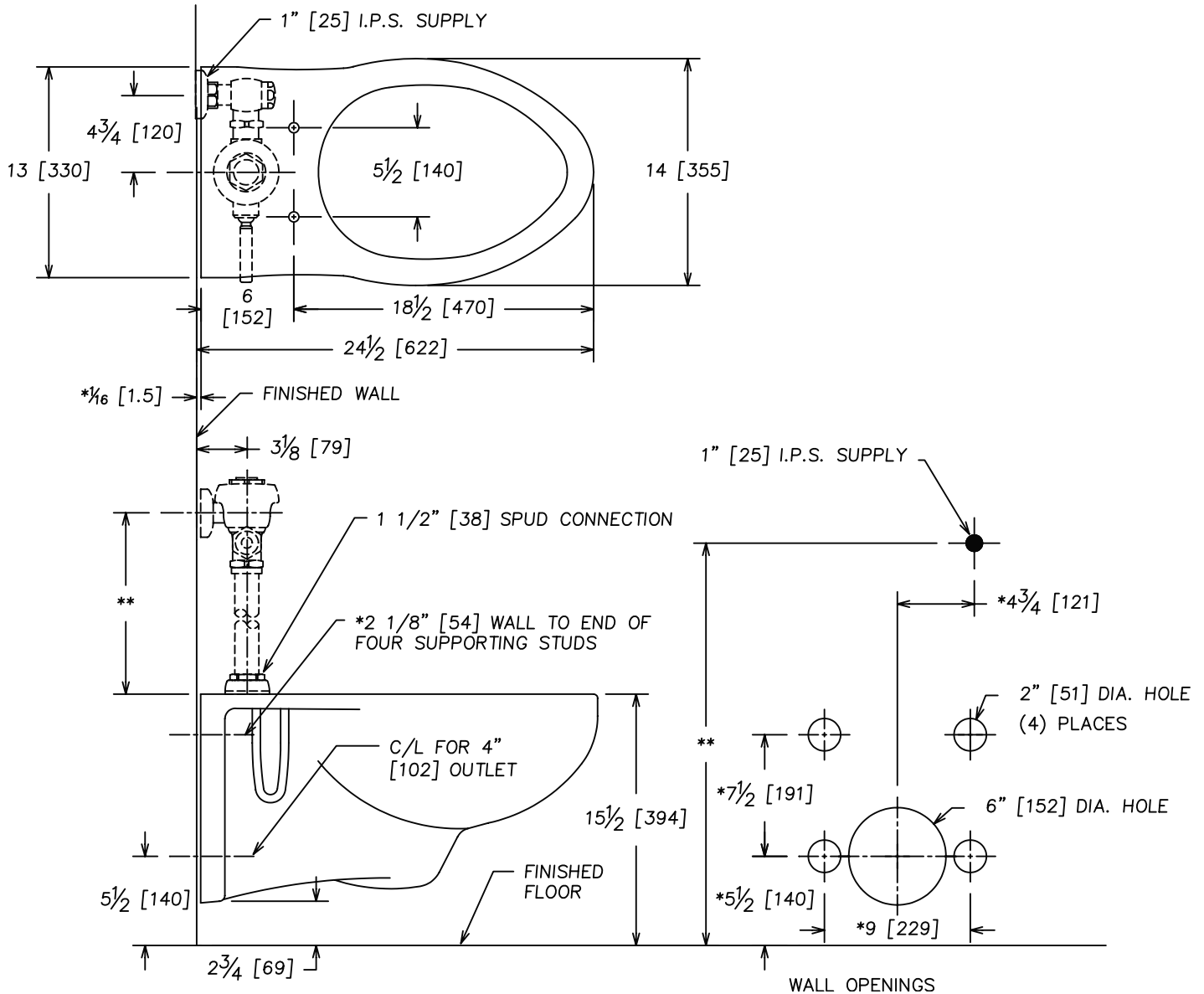
- Fixture conforms to ANSI/ASME A112.19.2M standard.
- **For efficient operation of the bowl, a minimum flowing water pressure of 25 P.S.I. is required at the valve.
- Fixture complies to ADA requirements when mounted at rim height of 17".

WATER ECONOMY FACTS

Average Gallons Per Flush	**25 PSI	50 PSI	80 PSI
3446 (gpf)	1.40	1.50	1.50
Trapway.....	2"		
Water Surface.....	12" x 10"		
Water Seal.....	2 3/16"		



* Not furnished by CR/PL, L.L.C. Description for specification purposes only.



- NOTE: ROUGHING-IN DIMENSIONS FOR CLOSET SUPPORT UNIT TO BE OBTAINED DIRECT FROM MANUFACTURER. CHECK WITH MANUFACTURER FOR PROPER OUTLET COUPLING EXTENSION BEYOND FINISHED WALL. FOR OUTLET CONNECTION USE NEOPRENE OR RUBBER GASKETS. NOT FOR USE WITH A WAX RING.
- * THESE DIMENSIONS MUST BE MAINTAINED FOR PROPER INSTALLATION.
 - ** VARIABLE-CHECK WITH MANUFACTURER OF FLUSHVALVE FOR PROPER ROUGHING-IN DIMENSION.
 - *** FIXTURE COMPLIES WITH AMERICANS WITH DISABILITIES ACT WHEN MOUNTED AT RIM HEIGHT OF 17".