



Siphon Jet Urinal
Vitreous China

FEATURES

- 7360 Embassy™

7360 Embassy™ (1.0 gpf / 3.8 lpf) vitreous china siphon jet urinal with integral extended shields and 14" [356] lip, flushing rim and trap, 3/4" [19] top spud, 2" [51] I.P.S. female outlet connection, and supporting hangers.

Valve:* Flushvalve with vacuum breaker, 1" [25] angle screwdriver stop and flush connection. Suggested (1.0 gpf / 3.8 lpf) gallon flushvalves are:

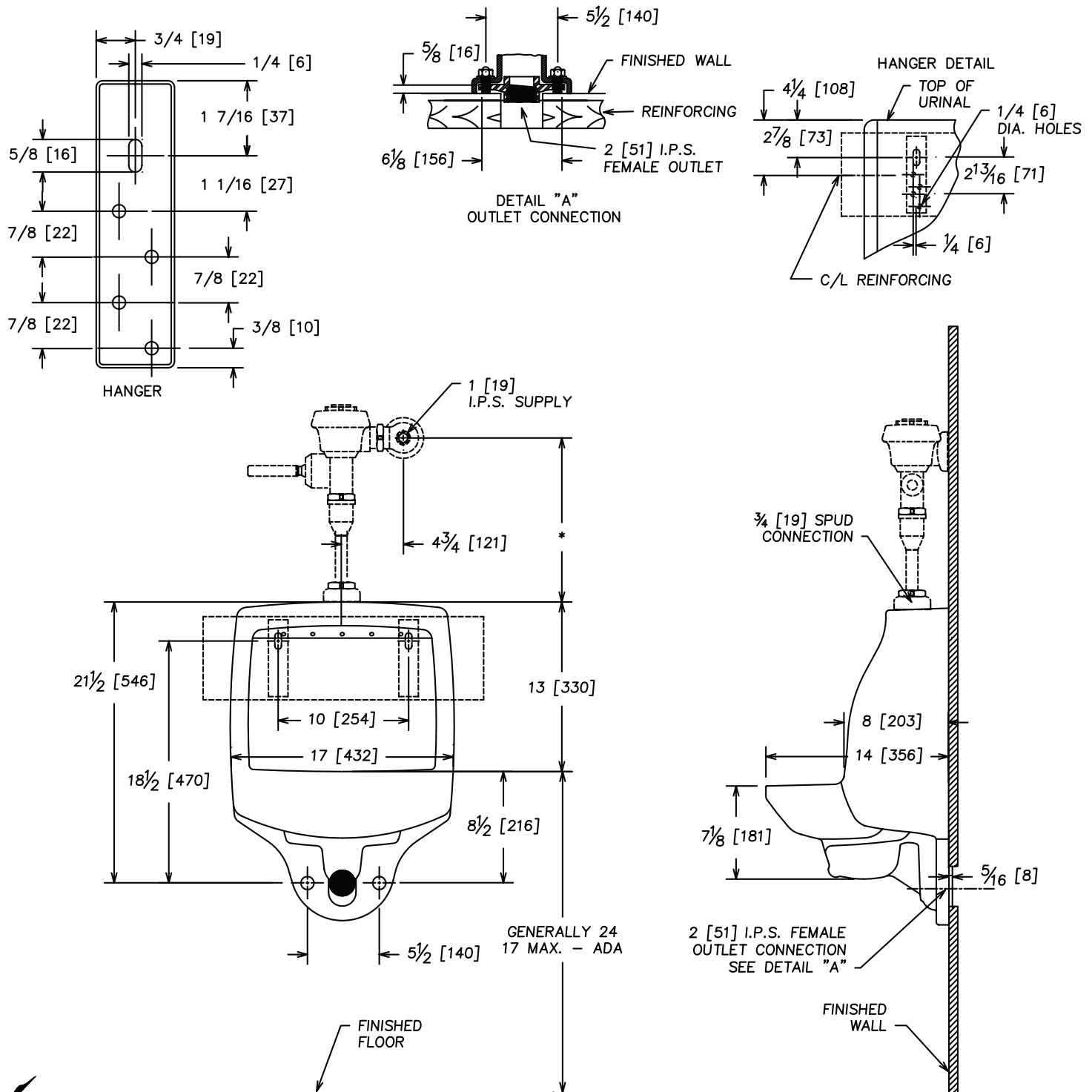
Sloan "Royal"	#186-1
Delany "Flushboy"	#F451-1
Zurn "Aquaflush"	#Z-6003-WS1

Support: Wall mounted with supplied concealed hangers and supporting bolts

NOTES

- Fixture conforms to ANSI/ASME A112.19.2M standard.
- For efficient operation of the urinal, a minimum flowing water pressure of 15 P.S.I. is required at the valve.
- ADA Compliant when mounted at 17" [432] maximum height.





NOTE: * VARIABLE-CHECK WITH MANUFACTURER OF FLUSHVALVE FOR PROPER ROUGHING-IN DIMENSION.

** FIXTURE COMPLIES WITH AMERICANS WITH DISABILITIES ACT WHEN MOUNTED AT RIM HEIGHT OF 17" [432].

IMPORTANT: Roughing-in dimensions may vary 1/2" [13] and are subject to change or cancellation without prior notice. No responsibility is assumed for use of superseded or voided leaflets.