



Blowout Wall Hung Urinal
Vitreous China

FEATURES

• **7390 Del Rio™**

7390 Del Rio™ vitreous china 18" [457] wide wall hung (1.0 gpf / 3.8 lpf), blowout urinal with integral extended shields, flushing rim, 14" [355] lip and trap with cleanout, 1¼" [32] top inlet, 2" [51] I.P.S. female outlet connection.

Valve:* Flushvalve with vacuum breaker, 1" [25] angle screwdriver stop and flush connection. Suggested (1.0 gpf / 3.8 lpf) gallon flushvalves are:

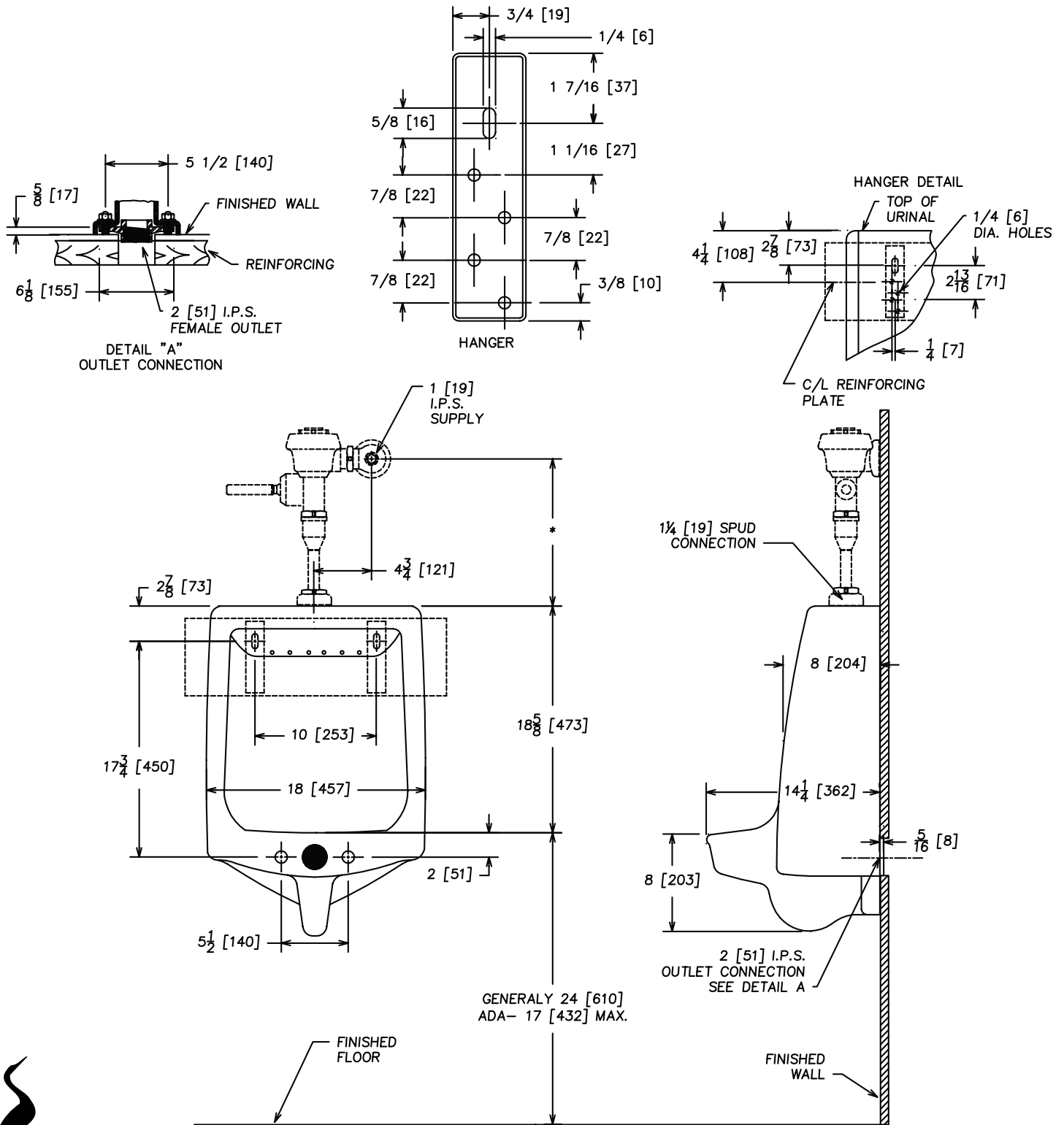
Sloan "Royal"	#180-1
Delany "Flushboy"	#F452-1
Zurn "Aquaflush"	#Z-6001-WS1

Support: Wall mounted with supplied concealed hangers and supporting bolts

NOTES

- Fixture conforms to ANSI/ASME A112.19.2M standard.
- For efficient operation of the urinal, a minimum flowing water pressure of 20 P.S.I. is required at the valve.
- ADA Compliant when mounted at 17" [432] maximum height.





NOTE: * VARIABLE-CHECK WITH MANUFACTURER OF FLUSH VALVE FOR PROPER ROUGHING-IN DIMENSION.
 ** FIXTURE COMPLIES WITH AMERICANS WITH DISABILITIES ACT WHEN MOUNTED AT RIM HEIGHT OF 17" [432].

IMPORTANT: Roughing-in dimensions may vary $\frac{1}{2}$ " [13] and are subject to change or cancellation without prior notice. No responsibility is assumed for use of superseded or voided leaflets.