

Lustertone® Double Bowl Sinks
Model LR250 Sink
Model LRAD250 – A.D.A. Compliant Sink



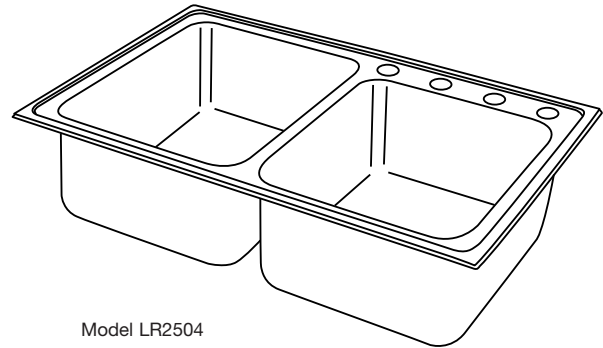
SPECIFICATIONS

GENERAL

Highest quality sink seamlessly drawn of #18 gauge, type 304 (18-8) nickel bearing stainless steel. Self-rimming.

DESIGN FEATURES

LR Bowl Depth: 8".
 LRAD Bowl Depth: 5-1/2", 6" or 6-1/2".
 Coved Corners: 1-3/4" radius.
 Bowl and Faucet Deck Recess: 3/16" below outside edge of sink.
 Finish: Exposed surfaces are hand blended to a lustrous highlighted satin finish.
 Underside: Fully undercoated to dampen sound and prevent condensation. LR250 underside is fully protected by heavy duty Sound Guard™ undercoating.



Model LR2504

DRAIN OPENING

LR250 and LRAD250 drain openings are 3-1/2" and located as illustrated. Note LRAD250 small bowl drain is located centered left-to-right and off center front-to-back as illustrated.
 NOTE: Four faucet holes furnished unless otherwise specified.
 Recommended Sink Base: 36".

OPTIONAL ACCESSORIES

Rinsing Baskets: LKRB1611, LKRB1614 or LKERBSS.
 Bottom Grids: LKBG1613 (LR250), LKOBG1613 (LRAD250).
 Cutting Boards: CBR1316, CBR1418, CBS1316 or CBS1418.
 These sinks comply with ANSI Standard A112.19.3M.



These sinks are listed by the International Association of Plumbing and Mechanical Officials as meeting the requirements of the Uniform Plumbing Code.

SINK DIMENSIONS (INCHES)*

Model Number	Overall		Inside Left Bowl			Inside Right Bowl			Cutout in Countertop (1 1/2" Radius Corners)		No. of 1 1/2" Dia. Faucet Holes 4" Center	Ship. Wt. Lbs.
	L	W	L	W	D	L	W	D	L	W		
LR250	33	22	14	18	8	13 1/2	16	8	32 3/8	21 3/8	1, 2, 3 or 4	21
LRAD250	33	22	14	18	**	13 1/2	16	**	32 3/8	21 3/8	1, 2, 3 or 4	21

*Length is left to right. Width is front to back.

**Available in 5-1/2", 6" and 6-1/2" depths. Please consult your sales representative for other depths or modifications.

THIS PRODUCT, AS CONSTRUCTED IS SUBJECT TO INTERPRETATION OF A.D.A. REQUIREMENTS. THE UNOBSTRUCTED KNEE SPACE REQUIRED TO SATISFY A.D.A. STANDARDS MAY NOT BE DESIRABLE.

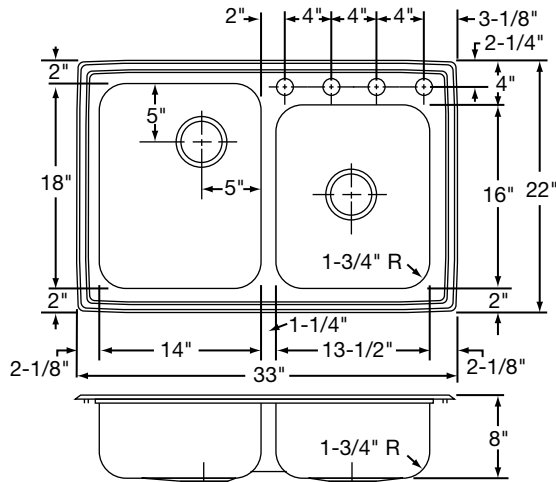
SEE OTHER SIDE FOR PRODUCT DIMENSIONS.

ALL DIMENSIONS IN INCHES, TO CONVERT TO MILLIMETERS MULTIPLY BY 25.4.

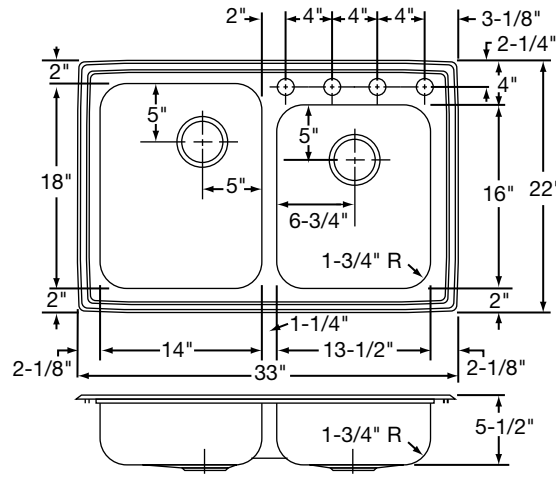
In keeping with our policy of continuing product improvement, Elkay reserves the right to change product specifications without notice.

This specification describes an Elkay product with design, quality and functional benefits to the user. When making a comparison of other producers' offerings, be certain these features are not overlooked.

ROUGH-IN DIMENSIONS

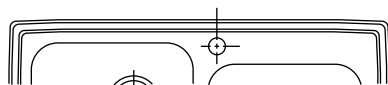


Model LR250 Illustrated

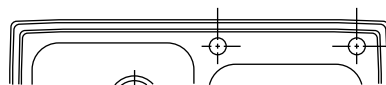


Model LRAD250554 Illustrated

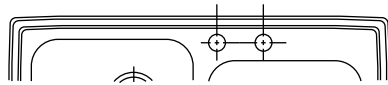
HOLE DRILLING CONFIGURATIONS



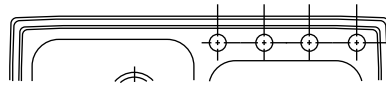
LR(AD)2501



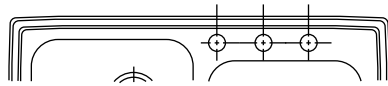
LR250S2*



LR(AD)2502



LR(AD)2504



LR(AD)2503

*Not available in LRAD