

SPECIFICATIONS IN INCHES

GENERAL

Model No. SS _____ #14 gauge, type 304 stainless steel scullery sink. Compartments 14" deep. Square corner welded construction. Full length 8" high back-splash with 45° sloped top. 1-1/2" wide sloping top channel rims. Integral drain-board/s, sink compartments pitched to drain. Exposed surfaces polished to a satin finish.

Sink, supported on (4) LK251 stainless steel, 1-5/8" O.D. tubular legs, #16 gauge wall thickness. Adjustable bullet shaped feet.

Shaded areas are models carried in stock with standard faucet location.

Non-shaded areas with specified dimensions are standard models which must be made to order – standard faucet location unless otherwise specified.

Last item in each group is custom. Fill in dimensions. Standard faucet location unless otherwise specified. Drainboards over 25-1/2" furnished with one tubular leg.

Drainboards over 48" furnished with two tubular legs.

SPECIFIED FITTINGS:

SUPPLY:

DRAIN:

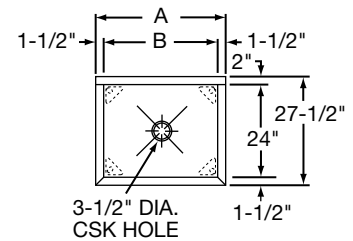
FURNISHED WITH:

LK251. (Four) Stainless steel tubular legs, 1-5/8" O.D., #16 gauge. Adjustable bullet shaped feet.

(CHECK MODEL SPECIFIED):

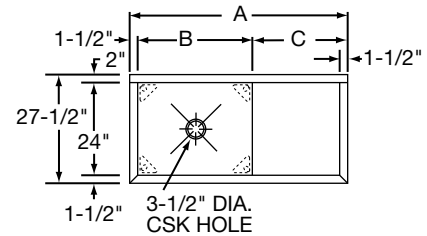
NO DRAINBOARD

Model Number	Dimensions	
	A	B
SS8124	27	24
SS8130	33	30
SS8136	39	36
• SSC8100		



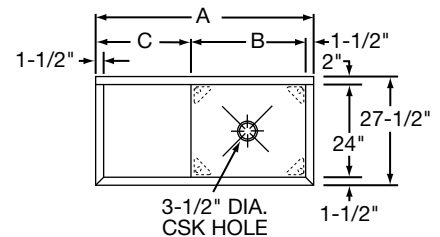
RIGHT DRAINBOARD

Model Number	Dimensions		
	A	B	C
SS8124R	49 1/2	24	24
SS8130R	55 1/2	30	24
SS8136R	61 1/2	36	24
• SSC8100R			



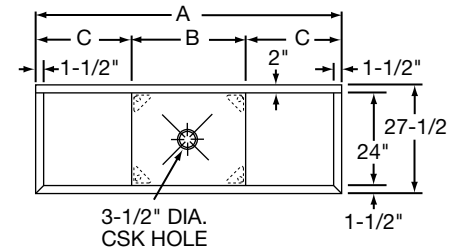
LEFT DRAINBOARD

Model Number	Dimensions		
	A	B	C
SS8124L	49 1/2	24	24
SS8130L	55 1/2	30	24
SS8136L	61 1/2	36	24
• SSC8100L			



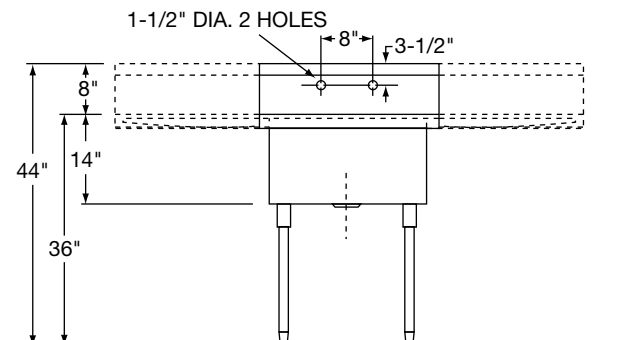
RIGHT & LEFT DRAINBOARD

Model Number	Dimensions		
	A	B	C
SS8124LR	72	24	24
SS8130LR	78	30	24
SS8136LR	84	36	24
• SSC8100LR			



FAUCET DRILLINGS AND LOCATION STANDARD AS ILLUSTRATED. (NON-STANDARD FAUCET AND OVERFLOW DRILLING LOCATIONS ARE AVAILABLE. SPECIFY ON DRAWING AT RIGHT.)

ALL DIMENSIONS IN INCHES.
SEE OTHER SIDE FOR DIMENSIONS IN MILLIMETERS.



SPECIFICATIONS IN MILLIMETERS

GENERAL

Model No. SS _____ #14 gauge, type 304 stainless steel scullery sink. Compartments 356mm deep. Square corner welded construction. Full length 203mm high backsplash with 45° sloped top. 38mm wide sloping top channel rims. Integral drainboard/s, sink compartments pitched to drain. Exposed surfaces polished to a satin finish.

Sink, supported on (4) LK251 stainless steel, 41mm O.D. tubular legs, #16 gauge wall thickness. Adjustable bullet shaped feet.

Shaded areas are models carried in stock with standard faucet location.

Non-shaded areas with specified dimensions are standard models which must be made to order – standard faucet location unless otherwise specified.

Last item in each group is custom. Fill in dimensions. Standard faucet location unless otherwise specified.

Drainboards over 648mm furnished with one tubular leg.

Drainboards over 1,219mm furnished with two tubular legs.

SPECIFIED FITTINGS:

SUPPLY:

DRAIN:

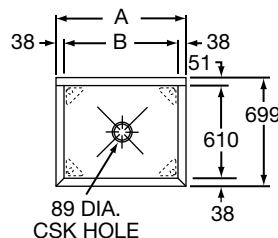
FURNISHED WITH:

LK251. (Four) Stainless steel tubular legs, 41mm O.D., #16 gauge. Adjustable bullet feet.

(CHECK MODEL SPECIFIED):

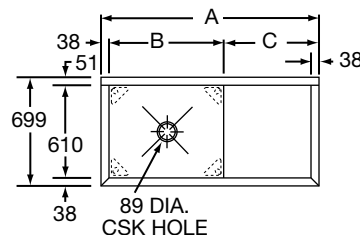
NO DRAINBOARD

Model Number	Dimensions	
	A	B
SS8124	686	610
SS8130	838	762
SS8136	991	914
• SSC8100		



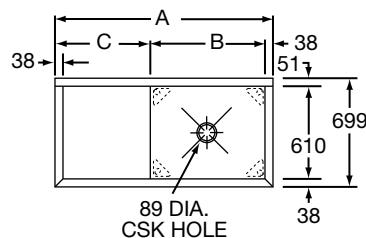
RIGHT DRAINBOARD

Model Number	Dimensions		
	A	B	C
SS8124R	1257	610	610
SS8130R	1410	762	610
SS8136R	1562	914	610
• SSC8100R			



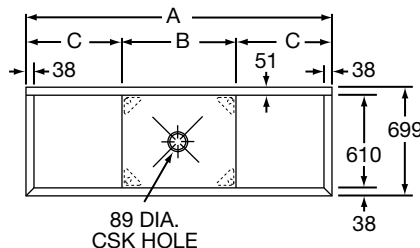
LEFT DRAINBOARD

Model Number	Dimensions		
	A	B	C
SS8124L	1257	610	610
SS8130L	1410	762	610
SS8136L	1562	914	610
• SSC8100L			



RIGHT & LEFT DRAINBOARD

Model Number	Dimensions		
	A	B	C
SS8124LR	1829	610	610
SS8130LR	1981	762	610
SS8136LR	2134	914	610
• SSC8100LR			



FAUCET DRILLINGS AND LOCATION STANDARD AS ILLUSTRATED. (NON-STANDARD FAUCET AND OVERFLOW DRILLING LOCATIONS ARE AVAILABLE. SPECIFY ON DRAWING AT RIGHT.)

ALL DIMENSIONS IN MILLIMETERS.
 SEE OTHER SIDE FOR DIMENSIONS IN INCHES.

