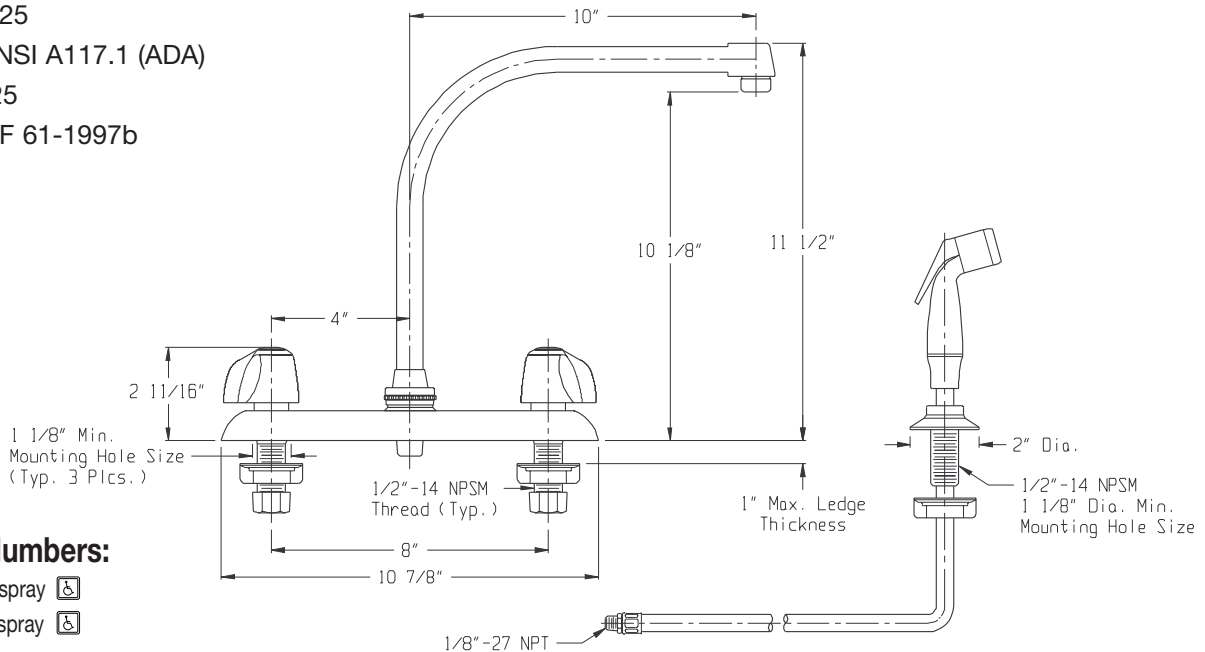
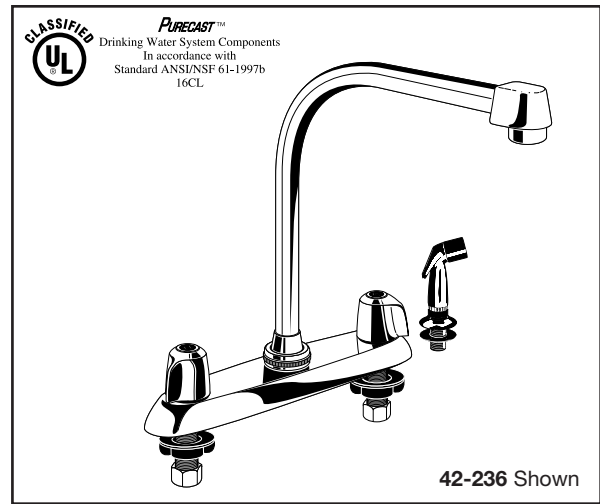


Features:

- Cast brass, heavy chrome plated body
- Metal handles with acrylic hot and cold index buttons
- Compression stems with renewable brass seats
- Working parts can be easily replaced
- Easy Filler™ spout
- 8" centers for mounting
- 2.2 gpm (8.3 L/min) @ 60 psi maximum aerator
- 1/2" NPSM supply connections with brass coupling nuts
- ADA compliant handles operate with less than 5 lbs. force

Technical Specifications:

- ASME A112.18.1M
- ASSE 1025
- CABO/ANSI A117.1 (ADA)
- CSA B125
- ANSI/NSF 61-1997b



Catalog Numbers:

- 42-136 Less spray
- 42-236 With spray

Prefixes Available:

- 8- Crystalite Handles, Compression Stems
 - X- Less Handles, Compression Stems
 - 80- Metal Handles, Washerless Cartridges
 - 88- Crystalite Handles, Washerless Cartridges
 - C0- Metal Handles, Ceramic Cartridges
 - C8- Crystalite Handles, Ceramic Cartridges
 - XX- Less Handles, Washerless Cartridges
- For Less Handles, Ceramic Cartridges, See 52-020 Series

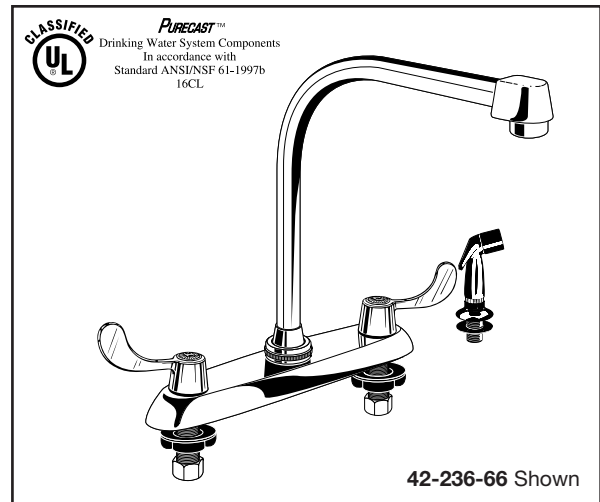
Suffixes Available

- 45 Almond spray hose and holder (std on AL-units)
- 46 White spray hose and holder (std on WH-units)
- 47 Brass mounting nuts
- 49 Zinc die cast mounting nuts
- 66 Wrist blade handles
- 67 Vandal proof aerator- .5 gpm
- 68 Vandal proof aerator- 2.2 gpm
- 95 Monel seats in place of brass seats
- 96 Celcon seats in place of brass seats



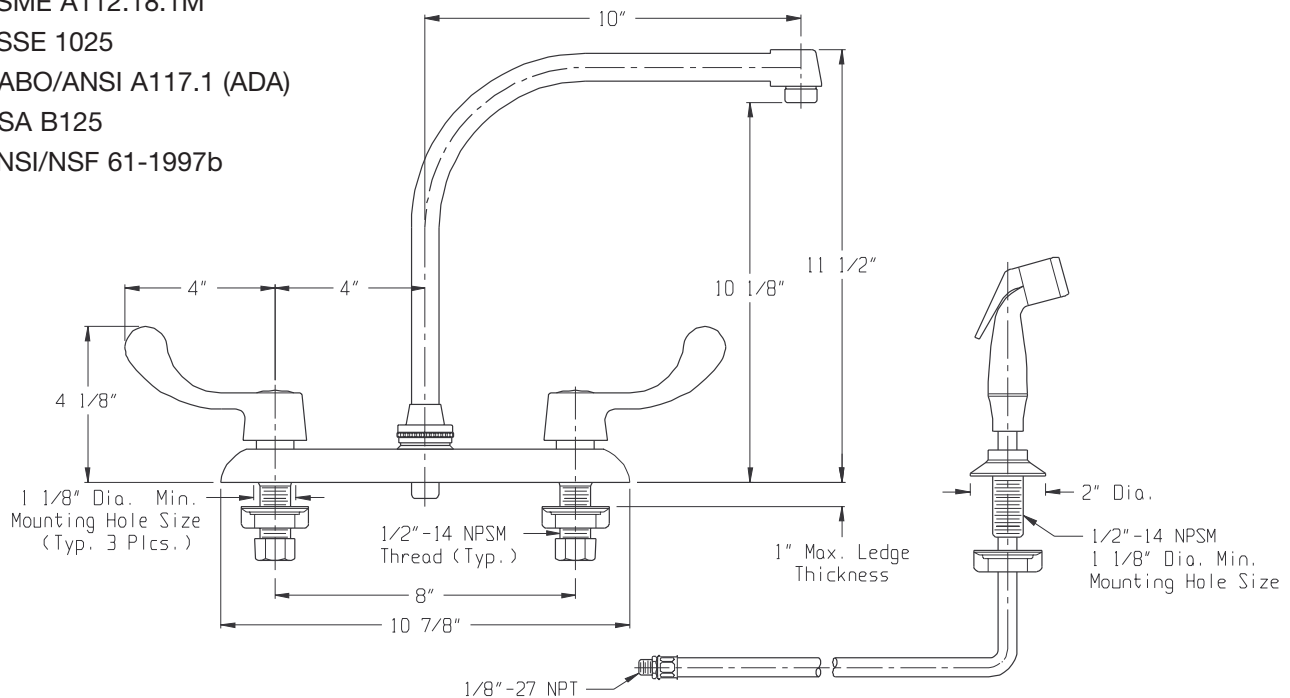
Features:

- Cast brass, heavy chrome plated body
- Wrist blade handles with color coded hot and cold index buttons
- Compression stems with renewable brass seats
- Working parts can be easily replaced
- Easy Filler™ spout
- 8" centers for mounting
- 2.2 gpm (8.3 L/min) @ 60 psi maximum aerator
- 1/2" NPSM supply connections with brass coupling nuts
- ADA compliant handles operate with less than 5 lbs. force



Technical Specifications:

- ASME A112.18.1M
- ASSE 1025
- CABO/ANSI A117.1 (ADA)
- CSA B125
- ANSI/NSF 61-1997b



Catalog Numbers:

- 42-136-66 Less spray
- 42-236-66 With spray

Suffixes Available

- 45 Almond spray hose and holder (std on AL-units)
- 46 White spray hose and holder (std on WH-units)
- 47 Brass mounting nuts
- 49 Zinc die cast mounting nuts
- 67 Vandal proof aerator- .5 gpm
- 68 Vandal proof aerator- 2.2 gpm
- 95 Monel seats in place of brass seats
- 96 Celcon seats in place of brass seats

Prefixes Available:

C0- Ceramic Cartridges

