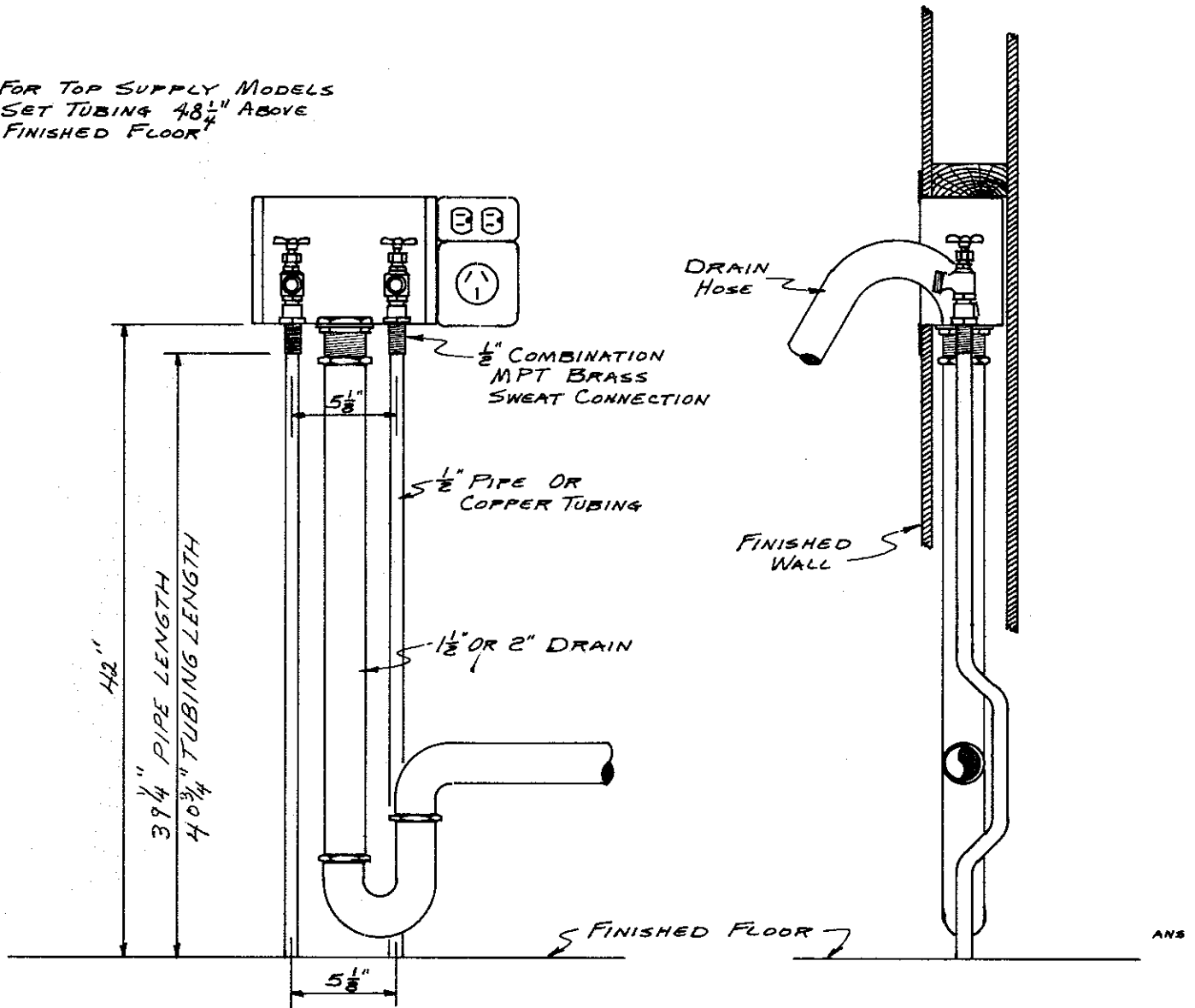


Guy Gray Manufacturing Co., Inc.

Blandville Road P. O. Box 2287 Paducah, KY 42002-2287 Phone (502) 554-4423

FOR TOP SUPPLY MODELS
SET TUBING 48 $\frac{1}{4}$ " ABOVE
FINISHED FLOOR



PLUMBING ROUGHING-IN MEASUREMENTS FOR SPACE SAVER WASHING MACHINE SUPPLY AND DRAIN - MODEL NWBED-150 & NWBED-200

INSTALLATION INSTRUCTIONS

1. Remove front plate from fixture
2. Fasten fixture to stud or header with screws in holes provided
3. Install half inch male end of connectors through half inch holes in bottom of fixture and secure with rubber washers - crow foot and half inch lock nuts.
4. Install half inch male faucets in female end of connector inside of fixture using pipe joint compound.
5. For copper installation sweat copper tube to bottom of connector
6. For galvanized pipe installation use half inch coupling or unions.
7. To connect drain line use flanged locknut with rubber washer with slipnut installed inside fixture
8. After wall is finished, replace front plate with screws provided with fixture