

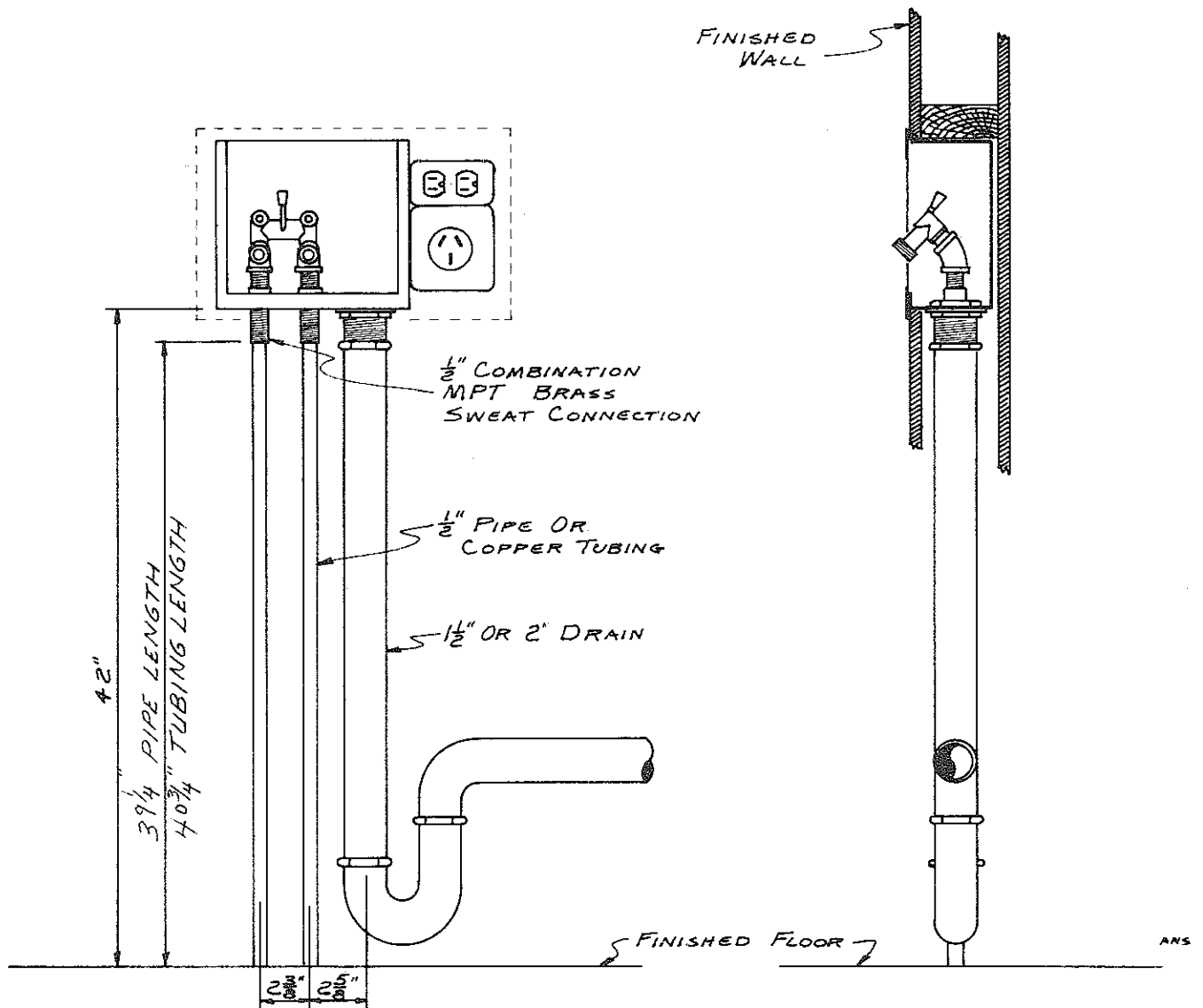
Guy Gray Manufacturing Co., Inc.

Blandville Road

P. O. Box 2287

Paducah, KY 42002-2287

Phone (502) 554-4423



PLUMBING ROUGHING-IN MEASUREMENTS FOR SPACE SAVER WASHING MACHINE SUPPLY AND DRAIN MODEL WNWBE150 & WNWBE200

INSTALLATION INSTRUCTIONS

1. Remove front plate from fixture.
2. Fasten fixture to stud or header with screws in holes provided.
3. Install half-inch male end of connectors through half-inch holes in bottom of fixture and secure with rubber washers, crow foot and half-inch lock nuts.
4. Install half-inch nipple in female end of connector inside of fixture using pipe joint compound--install half-inch forty-five degree ell to nipple.
5. Install half-inch male Duo-Cloz valve in forty-five degree ell.
6. For copper installation sweat copper tube to bottom of connector.
7. For galvanized pipe installation use half-inch coupling or unions.
8. To connect drain line, use flanged lock nut with rubber washer with slip nut installed inside fixture.
9. Drill weep hole in slip nut so any water spills in box will run into drain.
10. After wall is finished, replace front plate with screws provided with fixture.