



McGUIRE MFG. CO., INC.

60 Grandview Court
 P.O. Box 746 ♣ Cheshire, CT 06410
 203-699-1801 ♣ Fax 203-699-1813
 www.mcguiremfg.com

Part No.

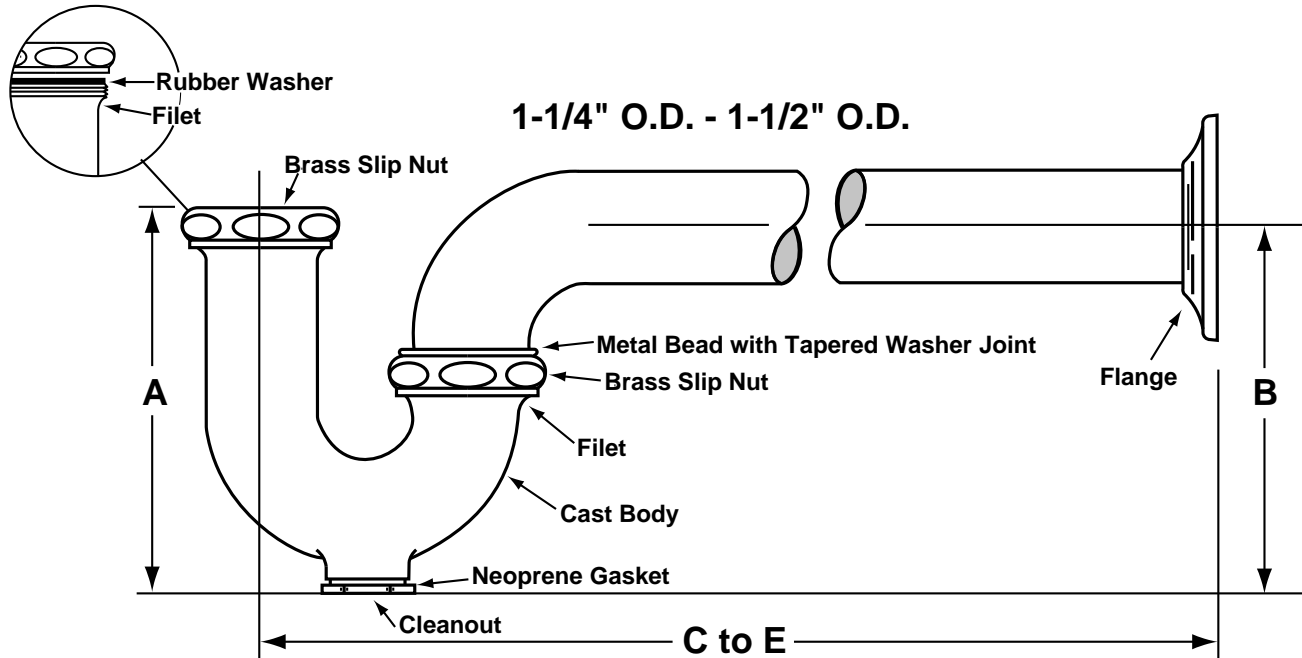
B8872, B8902, B8912,
 C8872, C8902, C8912

Product Specification

Cast Body P-Trap With Cleanout

Job Name:

Submittal Number:



Stock Line

ROUGHING MEASUREMENTS					
NO.	TRAP DIMENSIONS		A	B	C to E
	INLET	OUTLET			
B8872	1-1/4"	1-1/4"	5"	4-1/2"	10"
C8872	1-1/4"	1-1/4"	5"	4-1/2"	10"
B8902	1-1/4"	1-1/2"	5"	4-1/2"	10-1/2"
C8902	1-1/4"	1-1/2"	5"	4-1/2"	10-1/2"
B8912	1-1/2"	1-1/2"	5"	4-1/2"	10-1/2"
C8912	1-1/2"	1-1/2"	5"	4-1/2"	10-1/2"

Note: Suffix "C" indicates die cast slip nuts.

FED SPEC W.W.P. 541
CAST BRASS P TRAP
MINIMUM SEAL 2"

See options and accessories section for details on product variations.

Specifications:

P-Trap shall be chrome plated cast brass body (with, without) cleanout, with 17 gauge seamless tubular wall bend, slip nuts. Reducing washers shall be used with reducing cast brass nut. With (shallow, deep, bell) (steel, brass) or (forged brass with set screw) flange. P-Trap shall bear manufacturer and testing mark.