

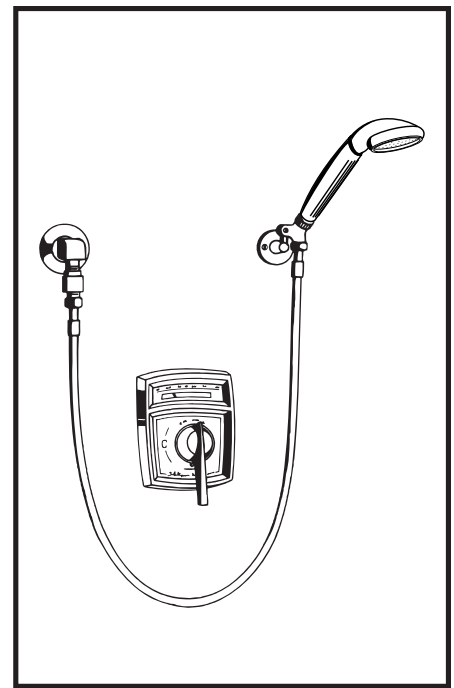
1-25VT-FS Safetymix® Visu-Temp® Shower System

Safetymix Visu-Temp Pressure-Balancing mixing valve with integral thermometer and adjustable stop screw to limit handle turn. Wall/hand shower with flexible 5' metal hose, in-line vacuum breaker, wall connection, flange and wall hook.

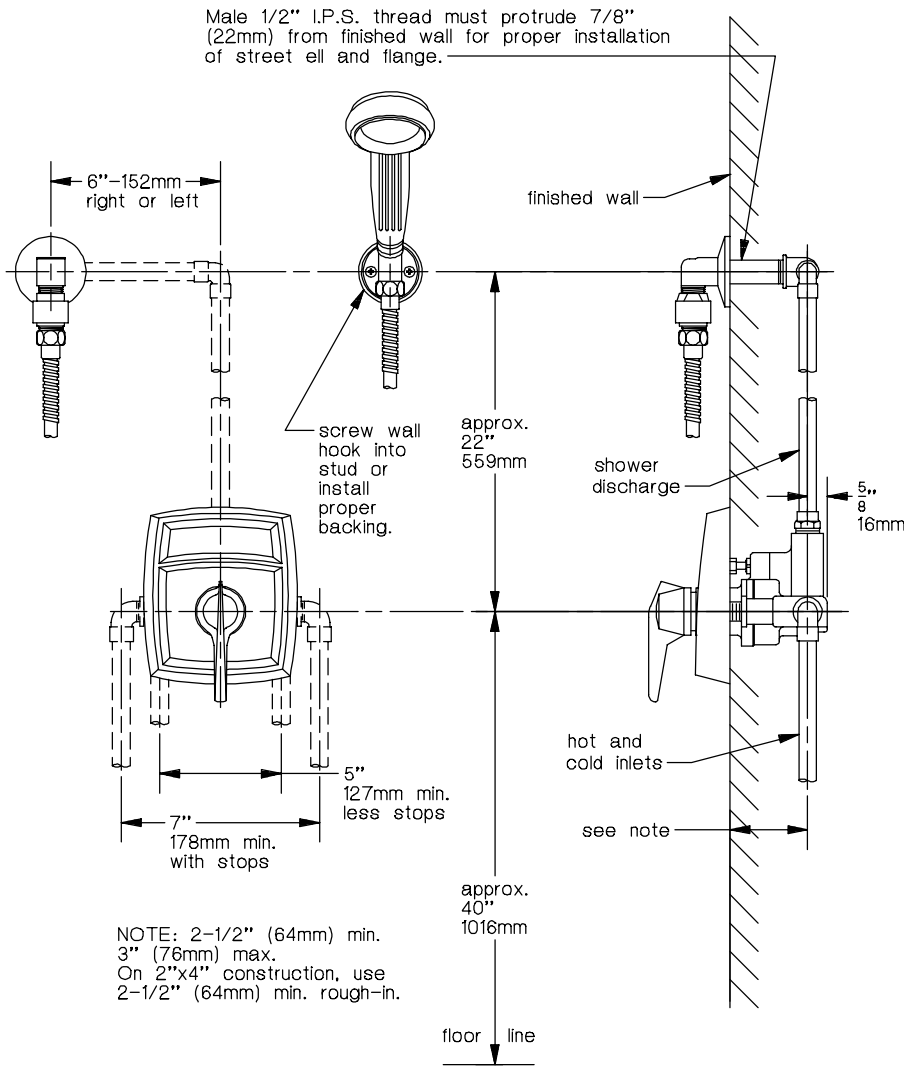
Modifications:

Add:

- Suffix X: Integral service stops - allows water shutoff at valve for service.
- Suffix VB: Elevated vacuum breaker with unions and wall flanges in place of in-line vacuum breaker.
- Suffix B30: 30" adjusting bar in place of wall hook.



SYMMONS PRODUCTS MEET
ANSI A112.18.1M, EPA '92
AND ALL KNOWN FLOW RATE
REQUIREMENTS.
Showerheads and Hand Showers
2.5 GPM (9.5 L/min)



Job/Location

.....

.....

.....

Engineer

.....

.....


.....

Contractor

.....

.....

.....

 This drawing to be used for rough-in installation only. All floor to center dimensions optional. Concealed piping and fittings not furnished by manufacturer. **Dimensions are for ADA compliance (Americans with Disabilities Act).** Consult ADAAG or your state regulations for proper product choice and mounting locations. For complete installation, adjustment and service information, see installation instructions.

SYMMONS INDUSTRIES, INC.
31 Brooks Drive, Braintree, MA 02184
TEL: 1-800-SYMMONS, (781) 848-2250 FAX: 1-800-961-9621, (781) 843-3849
website: www.symmons.com

