

SCOT® Slow-Closing Omni Temperature Lavatory Faucet

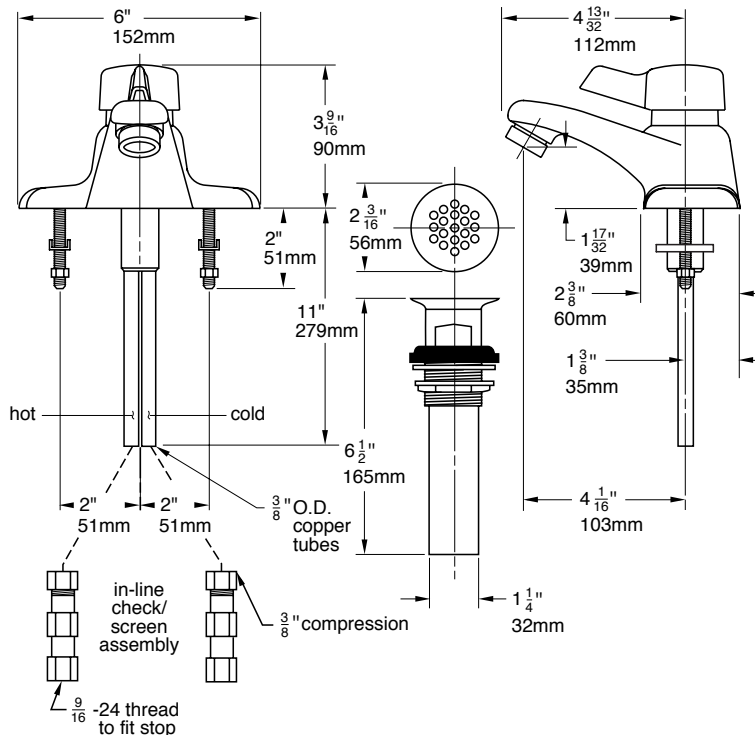
- S-60-G-H: With grid strainer drain assembly
- S-60-P-H: With pop-up drain assembly
- S-60-1-H: With lift rod only
- S-60-H: Faucet only

SCOT metering/temperature selection lavatory faucet with blade type handle for handicap accessible applications (replaces S-60 knob style handle). Cast brass 4" centerset with temperature limit stop to adjust outlet temperature and time limit stop to adjust flow time, includes (2) in-line check/screen assemblies. Spray outlet with 0.5 gpm flow rate. Vandal resistant.

Modifications:

Add:

- Suffix A: Vandal resistant aerator in place of 0.5 gpm spray outlet (1.25 GPM at 50 PSI)
- Suffix NA: Non-aerated laminar flow outlet
- Suffix IPS: 1/2" IPS connectors
- Suffix STE: Supply tube extensions, 8" with compression couplings
- Suffix DP: Adaptor plate for 8" center installations
- Suffix OFG: Offset grid strainer



**SYMMONS PRODUCTS MEET
ANSI A112.18.1M, EPA '92
AND ALL KNOWN FLOW RATE
REQUIREMENTS.
Metering Faucets
0.25 gallons per cycle (1.0 L/cycle)**

Job/Location

.....
.....

Engineer

.....
.....

Contractor

.....
.....

For ADA compliance (Americans with Disabilities Act) consult ADAAG or your state regulations for proper product choice and mounting locations.

SYMMONS INDUSTRIES, INC.
31 Brooks Drive, Braintree, MA 02184-3804
TEL: 1-800-SYMMONS, (781) 848-2250 FAX: 1-800-961-9621, (781) 843-3849
Web site: www.symmons.com

