

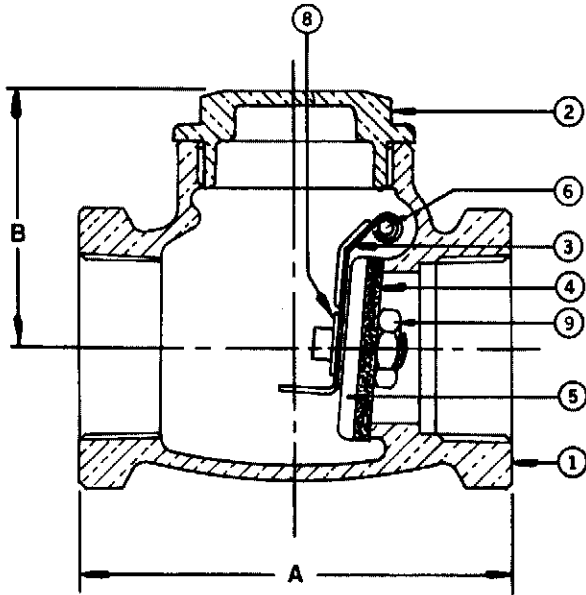
CHECK VALVES

MILWAUKEE VALVE COMPANY

CHECK 509/509T

HORIZONTAL SWING – BRONZE

125 lb. SWP-200 lb. WOG† • General Service
• Threaded Ends



| DIMENSIONS - INCHES / MILLIMETERS | | | | |
|-----------------------------------|--------|-------|-------|----------------|
| UNITS | SIZE | A | B | C _v |
| Inches | 1/4 | 2.13 | 1.44 | 3.3 |
| mm | 6.4 | 54.0 | 36.5 | |
| Inches | 3/8 | 2.13 | 1.44 | 6.0 |
| mm | 9.5 | 54.0 | 36.5 | |
| Inches | 1/2 | 2.31 | 1.44 | 10.0 |
| mm | 12.7 | 58.8 | 36.5 | |
| Inches | 3/4 | 2.63 | 1.69 | 18.0 |
| mm | 19.1 | 66.7 | 42.9 | |
| Inches | 1 | 3.25 | 2.00 | 31.0 |
| mm | 25.4 | 82.6 | 50.8 | |
| Inches | 1 1/4 | 3.56 | 2.13 | 54.0 |
| mm | 31.8 | 90.5 | 54.0 | |
| Inches | 1 1/2 | 4.00 | 2.38 | 76.0 |
| mm | 38.1 | 101.6 | 60.3 | |
| Inches | 2 | 4.75 | 2.81 | 131.0 |
| mm | 50.8 | 130.2 | 208.0 | |
| Inches | *2 1/2 | 6.00 | 3.63 | 192.0 |
| mm | 63.5 | 152.4 | 92.1 | |
| Inches | *3 | 6.88 | 4.19 | 297.0 |
| mm | 76.2 | 174.6 | 106.4 | |

† Non-Shock
* 509 Only

Rev. B

SPECIFICATIONS

509 Conforms to: MSS SP-80, Type 3,
Class 125, Threaded Ends.

MATERIAL LIST

| NO. | PART | MATERIAL | SPECIFICATION |
|-----------------|--------------------|-------------|------------------|
| 1 | Body | Bronze | ASTM B 62 |
| 2 | Cap | Bronze | ASTM B 62 |
| 3 | Lever | St. Steel - | Commercial |
| | | 509 | 1/4" to 2" Incl. |
| | | Bronze - | ASTM B 584 |
| 509 | 2 1/2" and 3" | | |
| | | Brass - | ASTM B 16 |
| | | 509T | 1/4" to 2" Incl. |
| 4 | Disc | Brass - | ASTM B 16 |
| | | 509 | 1/4" to 3/4" |
| | | | ASTM B 453 |
| | | | 1" to 1 1/2" |
| | | Bronze - | ASTM B 62 |
| | | 509 | 2" to 3" |
| | | PTFE - | Commercial |
| | | 509T | |
| 5 | Disc Holder | Brass | ASTM B 16 |
| | | | 1/4" to 3/4" |
| | | Bronze | ASTM B 62 |
| | | | 1" to 3" |
| 6 | Pin | St. Steel | Commercial |
| 7 ¹ | Disc Nut | Brass | ASTM B 16 |
| 8 | Retaining Ring | St. Steel | Commercial |
| 9 | Plug (not shown) | Brass - | ASTM B 16 |
| | | 509 | |
| 10 ¹ | Washer (not shown) | Brass - | ASTM B 16 |
| | | 509 | |

¹ Used on 2 1/2" and 3" sizes only

INNOVATION IN EVERY VALVE



MILWAUKEE VALVE

The information presented on this sheet is correct at the time of publication. Milwaukee Valve reserves the right to change design, and/or material specifications without notice. For the Installation, Operation and Maintenance Manual (IOM) see the engineering section on our website. For the most current information access www.milwaukeevalve.com

www.milwaukeevalve.com

CHECK 510T

HORIZONTAL SWING – BRONZE

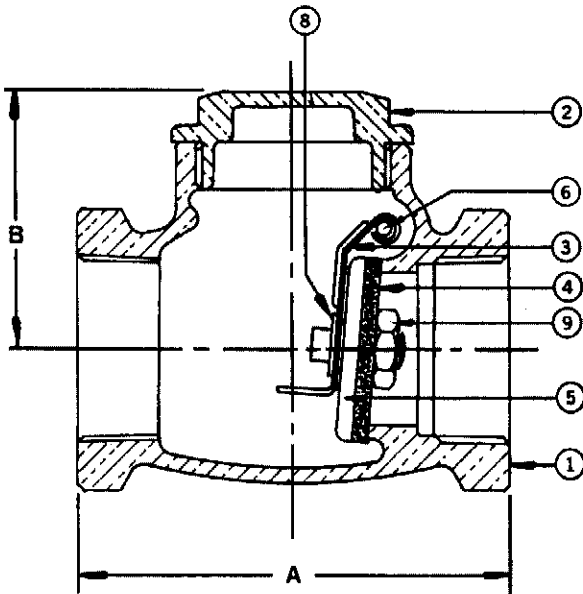
150 lb. SWP-300 lb. WOG† • Industrial Service
Bronze Seat • Teflon Disc • Threaded Ends

SPECIFICATIONS

| | |
|------|--|
| 510T | Conforms to: MSS SP-80, Type 4, Class 150, Threaded Ends. |
|------|--|

MATERIAL LIST

| NO. | PART | MATERIAL | SPECIFICATION |
|-----|------------------|-----------|----------------------------------|
| 1 | Body | Bronze | ASTM B 62 |
| 2 | Cap | Bronze | ASTM B 62 |
| 3 | Lever | Brass | Commercial |
| 4 | Disc | Teflon | |
| 5 | Disc Holder | Brass | ASTM B 16 1/4" and 3/4" Incl. |
| | | Bronze | ASTM B 62 1" to 2" Incl. |
| 6 | Pin | St. Steel | Commercial |
| 7 | Plug (not shown) | Brass | ASTM B 16 |
| 8 | Retaining Ring | St. Steel | Commercial |
| 9 | Disc Nut | Brass | Commercial |



DIMENSIONS - INCHES / MILLIMETERS

| UNITS | SIZE | A | B | C _v |
|--------|-------|-------|-------|----------------|
| Inches | 1/4 | 2.13 | 1.44 | 3.3 |
| mm | 6.4 | 54.0 | 36.5 | |
| Inches | 3/8 | 2.13 | 1.44 | 6.0 |
| mm | 9.5 | 54.0 | 36.5 | |
| Inches | 1/2 | 2.31 | 1.44 | 10.0 |
| mm | 12.7 | 58.8 | 36.5 | |
| Inches | 3/4 | 2.63 | 1.69 | 18.0 |
| mm | 19.5 | 66.7 | 42.9 | |
| Inches | 1 | 3.25 | 2.00 | 31.0 |
| mm | 25.4 | 82.6 | 50.8 | |
| Inches | 1 1/4 | 3.56 | 2.13 | 54.0 |
| mm | 31.8 | 90.5 | 54.0 | |
| Inches | 1 1/2 | 4.00 | 2.38 | 76.0 |
| mm | 38.1 | 101.6 | 60.3 | |
| Inches | 2 | 4.75 | 2.81 | 131.0 |
| mm | 50.8 | 130.2 | 208.0 | |

† Non-Shock

Rev. 5

INNOVATION IN EVERY VALVE



MILWAUKEE VALVE

The information presented on this sheet is correct at the time of publication. Milwaukee Valve reserves the right to change design, and/or material specifications without notice. For the Installation, Operation and Maintenance Manual (IOM) see the engineering section on our website. For the most current information access www.milwaukeevalve.com

www.milwaukeevalve.com

CHECK 548B/548T

BRONZE SPRING CHECK VALVE*

RATING

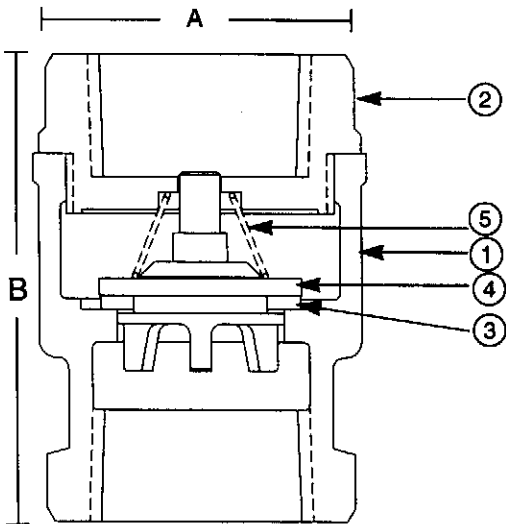
- 250 PSI NON-SHOCK COLD WATER, OIL OR GAS

FEATURES

- BRONZE BODY
- THREADED ENDS
- BRONZE SPRING
- BUNA DISC RING
- BRONZE DISC HOLDER
- 100% FACTORY TESTED
- SILENT CLOSING
(minimizes water hammer)

MATERIAL SPECIFICATION

| NO. | PART | MATERIAL | SPECIFICATION |
|-----|-------------|-------------|-------------------|
| 1 | Body | Cast Bronze | ASTM B584, C84400 |
| 2 | Tail Piece | Cast Bronze | ASTM B584, C84400 |
| 3 | Disc | Buna/TFE | |
| 4 | Disc Holder | Cast Bronze | ASTM B584, C85700 |
| 5 | Spring | Bronze | ASTM B103, C52100 |



Do not use for reciprocating air compressor service.

| DIMENSIONS - INCHES / MILLIMETERS | | | | | |
|-----------------------------------|-------|------|------|--------|----------------|
| UNITS | SIZE | A | B | Weight | C _v |
| Inches | 3/8 | 1.22 | 1.97 | 0.35 | 2.5 |
| mm | 9.5 | 31.0 | 50.1 | | |
| Inches | 1/2 | 1.22 | 2.09 | 0.44 | 4.1 |
| mm | 12.7 | 31.0 | 53.2 | | |
| Inches | 3/4 | 1.50 | 2.31 | 0.57 | 7.6 |
| mm | 19.1 | 38.1 | 58.8 | | |
| Inches | 1 | 1.91 | 2.66 | 0.89 | 13.0 |
| mm | 25.4 | 48.4 | 67.5 | | |
| Inches | 1 1/4 | 2.16 | 3.09 | 1.28 | 23.0 |
| mm | 37.8 | 54.8 | 78.6 | | |
| Inches | 1 1/2 | 2.59 | 3.31 | 1.72 | 31.0 |
| mm | 38.1 | 65.9 | 84.2 | | |
| Inches | 2 | 3.13 | 3.78 | 2.58 | 54.0 |
| mm | 50.8 | 79.4 | 96.0 | | |

* International VALVE

Rev. 5

INNOVATION IN EVERY VALVE



MILWAUKEE VALVE

www.milwaukeevalve.com

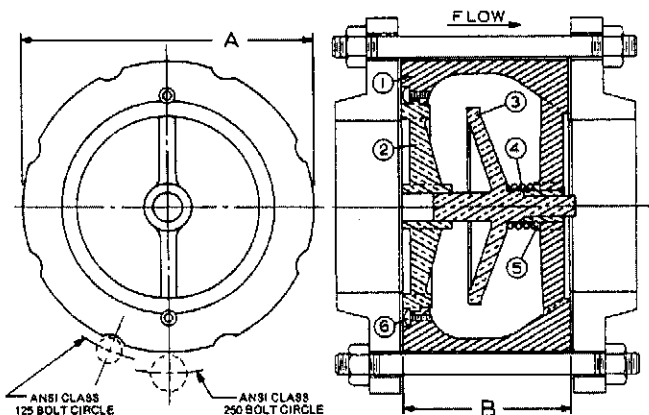
The information presented on this sheet is correct at the time of publication. Milwaukee Valve reserves the right to change design, and/or material specifications without notice. For the Installation, Operation and Maintenance Manual (IOM) see the engineering section on our website. For the most current information access www.milwaukeevalve.com

♻️ Printed on recycled paper with soy ink. 05/05

SILENT CHECK VALVES 1400*

WAFER STYLE • SEMI-STEEL BODY

125 LB. CLASS • BRONZE TRIM**



MATERIAL LIST

| NO. | PART | MATERIAL |
|-----|---------|-----------------|
| 1 | Body | Cast Iron |
| 2 | Seat | Bronze |
| 3 | Plug | Bronze |
| 4 | Spring | Stainless Steel |
| 5 | Bushing | Bronze |
| 6 | Screw | Stainless Steel |

DIMENSIONS - INCHES / MILLIMETERS

| Units | Size | Weight Lbs. | A | B | C _v |
|--------|-------|-------------|-------|-------|----------------|
| Inches | 2 | 6 | 4.25 | 2.63 | 66 |
| mm | 50.8 | | 108.0 | 66.7 | |
| Inches | 2 1/2 | 7 | 5.00 | 2.88 | 88 |
| mm | 63.5 | | 127.0 | 73.0 | |
| Inches | 3 | 12 | 5.75 | 3.13 | 130 |
| mm | 76.2 | | 146.1 | 79.4 | |
| Inches | 4 | 18 | 7.00 | 4.00 | 228 |
| mm | 101.6 | | 177.8 | 101.6 | |
| Inches | 5 | 27 | 8.38 | 4.63 | 350 |
| mm | 127.0 | | 212.7 | 117.6 | |
| Inches | 6 | 42 | 9.75 | 5.50 | 520 |
| mm | 152.4 | | 247.7 | 139.7 | |
| Inches | 8 | 85 | 13.38 | 6.50 | 900 |
| mm | 203.2 | | 339.7 | 165.1 | |
| Inches | 10 | 146 | 16.00 | 8.25 | 1450 |
| mm | 254.0 | | 406.4 | 209.6 | |

| PRESSURE TEMPERATURE RATINGS | | | | |
|------------------------------|--------------------------------|-----------|--------------|-----------|
| TEMP. DEG. F. | MAX., NON-SHOCK SERVICE PRESS. | | | |
| | ANSI B16.1 FLG. RATINGS | | | |
| | 125 LB CLASS | | 250 LB CLASS | |
| | 2" - 12" | 14" - 42" | 2" - 12" | 11" - 42" |
| 0° - 150° | 200 | 150 | 400 | 300 |
| 200° | 190 | 135 | 370 | 280 |

| TEST PRESSURE | 300 | 230 | 600 | 450 |
|---------------|-----|-----|-----|-----|
|---------------|-----|-----|-----|-----|

* International Valve

**We reserve the right to substitute stainless steel trim.

NOTE: Stainless Steel trim recommended for temperatures 180° - 200° F.

Valve is designed for liquid service only. Install 5 to 10 pipe diameters downstream from pump discharge or elbows to avoid flow turbulence. Valve is designed to be mated to standard steel flanges.

DIMENSIONS - INCHES / MILLIMETERS

| Units | Size | Weight Lbs. | A | B | CV |
|--------|-------|-------------|-------|-------|------|
| Inches | 8 | 86 | 13.38 | 6.50 | 900 |
| mm | 203.2 | | 339.7 | 165.1 | |
| Inches | 10.00 | 137 | 16.00 | 8.25 | 1450 |
| mm | 254.0 | | 406.4 | 209.6 | |

SIZES 2" THRU 6" ARE COMBINATION ANSI CLASS 125 AND 250, VALVES USE ANSI CLASS 125

Rev. 7

INNOVATION IN EVERY VALVE



MILWAUKEE VALVE

The information presented on this sheet is correct at the time of publication. Milwaukee Valve reserves the right to change design, and/or material specifications without notice. For the Installation, Operation and Maintenance Manual (IOM) see the engineering section on our website. For the most current information access www.milwaukeevalve.com

www.milwaukeevalve.com

CHECK 1509

HORIZONTAL SWING – BRONZE

125 lb. SWP-200 lb. WOG† • General Service
• Sweat Ends

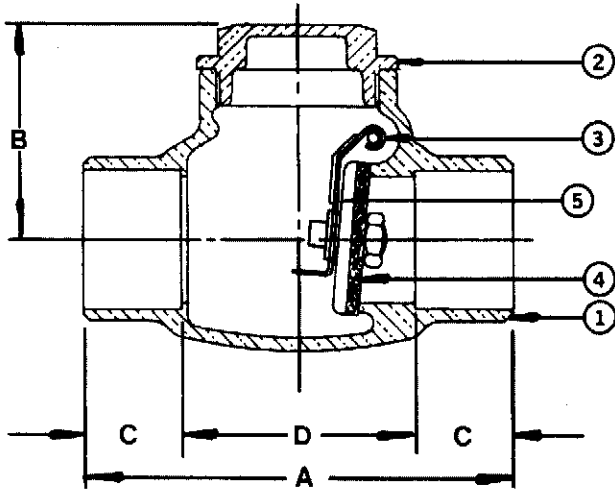
For Steam Service Specify 1509T (Teflon Disc)

SPECIFICATIONS

| | |
|------|--|
| 1509 | Conforms to: MSS SP-80. Type 3, Class 125, Soldered Ends. |
|------|--|

MATERIAL LIST

| NO. | PART | MATERIAL | SPECIFICATION |
|-----|------------------|-----------|--|
| 1 | Body | Bronze | ASTM B 62 |
| 2 | Cap | Bronze | ASTM B 62 |
| 3 | Lever | St. Steel | Commercial |
| 4 | Disc | Brass | ASTM B 16 3/8" to 3/4" Incl. ASTM B 62 1" to 2" Incl. |
| 5 | Pin | St. Steel | Commercial |
| 6 | Plug (not shown) | Brass | ASTM B 16 |
| 7 | Retaining Ring | St. Steel | Commercial |



DIMENSIONS - INCHES / MILLIMETERS

| UNITS | SIZE | A | B | C | D | C _v |
|--------|-------|-------|-------|------|-------|----------------|
| Inches | 3/8 | 2.25 | 1.44 | 0.38 | 1.50 | 3.3 |
| mm | 9.5 | 57.2 | 36.5 | 9.5 | 38.1 | 3.3 |
| Inches | 1/2 | 2.56 | 1.44 | 0.50 | 1.56 | 6.0 |
| mm | 12.7 | 65.1 | 36.5 | 12.7 | 39.7 | 6.0 |
| Inches | 3/4 | 3.31 | 1.69 | 0.75 | 1.75 | 10.0 |
| mm | 19.1 | 84.2 | 42.9 | 19.1 | 44.5 | 10.0 |
| Inches | 1 | 4.00 | 1.97 | 0.91 | 2.19 | 18.0 |
| mm | 25.4 | 101.6 | 50.0 | 23.0 | 55.6 | 18.0 |
| Inches | 1 1/4 | 4.25 | 2.16 | 0.97 | 2.31 | 31.0 |
| mm | 31.8 | 108.0 | 54.8 | 24.6 | 58.8 | 31.0 |
| Inches | 1 1/2 | 4.94 | 2.41 | 1.09 | 2.75 | 54.0 |
| mm | 38.1 | 125.4 | 61.1 | 27.8 | 69.9 | 54.0 |
| Inches | 2 | 6.13 | 2.81 | 1.34 | 3.44 | 76.0 |
| mm | 50.8 | 155.6 | 71.5 | 34.1 | 87.3 | 76.0 |
| Inches | 2 1/2 | 7.38 | 3.63 | 1.47 | 4.44 | 131.0 |
| mm | 63.5 | 187.3 | 92.1 | 37.3 | 122.7 | 131.0 |
| Inches | 3 | 8.50 | 4.81 | 1.66 | 5.19 | 192.0 |
| mm | 76.2 | 215.9 | 106.4 | 42.1 | 131.8 | 192.0 |

† Non-Shock

Rev. 8

INNOVATION IN EVERY VALVE



MILWAUKEE VALVE

The information presented on this sheet is correct at the time of publication. Milwaukee Valve reserves the right to change design, and/or material specifications without notice. For the Installation, Operation and Maintenance Manual (IOM) see the engineering section on our website. For the most current information access www.milwaukeevalve.com

www.milwaukeevalve.com

CHECK F-2974A

HORIZONTAL SWING - IRON

125 lb. SWP-200 lb. WOG† • Bolted Cap • Flanged Ends

These iron body check valves may be installed in horizontal and vertical lines with upward flow or in intermediate position. Flange shape and drilling to specification AMSE B 16.1 (125 lb).

F-2974A 26

Same as F-2974-A except all in iron

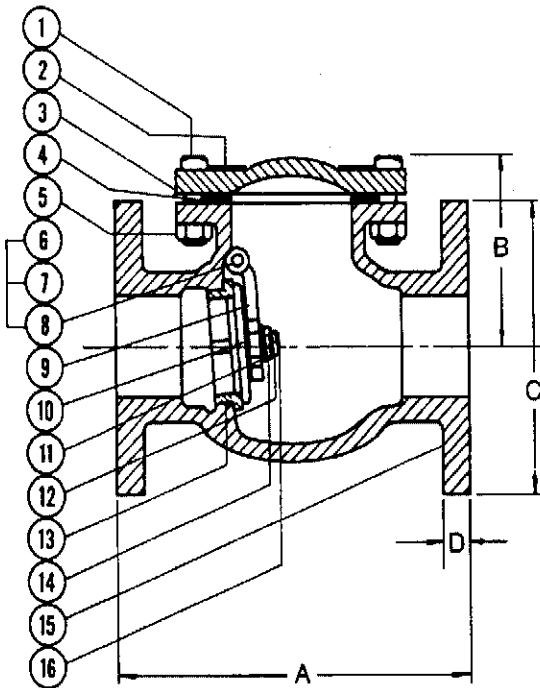
SPECIFICATIONS

F-2974-A | Conforms to MSS SP-71, Type 1.

MATERIAL LIST

| NO. | PART | MATERIAL | SPECIFICATION |
|-----------------|----------------------|-------------------------|--------------------|
| 1 | Bolt | Steel | |
| 2 | Identification Plate | Aluminum | |
| 3 | Bonnet | Cast Iron | ASTM A126, Class B |
| 4 | Body Gasket | Non-Asbestos | |
| 5 | Nut | Steel | |
| 6 | Side Plug | Brass | ASTM B16 |
| 7 | Gasket | Non-Asbestos | |
| 8 | Hanger Pin | Brass | ASTM B16 |
| 9 | Hanger | Ductile Iron | ASTM A536 |
| 10 ¹ | Disc | Cast Iron | ASTM A126, Class B |
| 11 | Washer | Steel | |
| 12 | Cotter Pin | Carbon Steel Galvanized | |
| 13 | Seat Ring | Bronze | ASTM B62 |
| 14 | Disc Nut | Steel | ASTM A307 |
| 15 | Body | Cast Iron | ASTM A126, Class B |
| 16 | Stud Bolt | Brass | ASTM B16 |

¹ Valve Disc - Cast iron with bronze disc face rings.



NOTE: On Pump discharge, the preferred check valve is an in-line spring loaded, swing design with lever and weight or lever and spring. Install these valves as far as possible from the pump and elbows and at a minimum length of 5 times the pipe diameter. See 1400 & 1800 series

DIMENSIONS - INCHES / MILLIMETERS

| UNITS | SIZE | A | B | C | D | C _v |
|--------|-------|-------|-------|-------|------|----------------|
| Inches | 2 | 8.00 | 3.94 | 6.00 | 0.63 | 137 |
| mm | 50.8 | 203.2 | 100.0 | 152.4 | 15.9 | |
| Inches | 2 1/2 | 8.50 | 4.50 | 7.00 | 0.69 | 221 |
| mm | 63.5 | 215.9 | 114.3 | 177.8 | 17.5 | |
| Inches | 3 | 9.50 | 5.13 | 7.50 | 0.75 | 327 |
| mm | 76.2 | 241.3 | 130.2 | 190.5 | 19.1 | |
| Inches | 4 | 11.50 | 6.13 | 9.00 | 0.94 | 605 |
| mm | 101.6 | 292.1 | 155.6 | 228.6 | 23.8 | |
| Inches | 5 | 13.00 | 6.81 | 10.00 | 0.94 | 975 |
| mm | 127.0 | 330.2 | 173.1 | 254.0 | 23.9 | |
| Inches | 6 | 14.00 | 8.00 | 11.00 | 1.00 | 1440 |
| mm | 152.4 | 355.6 | 203.2 | 279.4 | 25.4 | |
| Inches | 8 | 19.50 | 9.44 | 13.50 | 1.13 | 2670 |
| mm | 203.2 | 495.3 | 239.7 | 342.9 | 28.6 | |
| Inches | 10 | 24.50 | 12.06 | 16.00 | 1.19 | 4300 |
| mm | 254.0 | 622.3 | 306.4 | 406.4 | 30.2 | |
| Inches | 12 | 27.50 | 16.13 | 19.00 | 1.25 | 6350 |
| mm | 304.8 | 698.5 | 409.6 | 482.6 | 31.8 | |

† Non-Shock

Rev. 5

INNOVATION IN EVERY VALVE



MILWAUKEE VALVE

The information presented on this sheet is correct at the time of publication. Milwaukee Valve reserves the right to change design, and/or material specifications without notice. For the Installation, Operation and Maintenance Manual (IOM) see the engineering section on our website. For the most current information access www.milwaukeevalve.com

www.milwaukeevalve.com